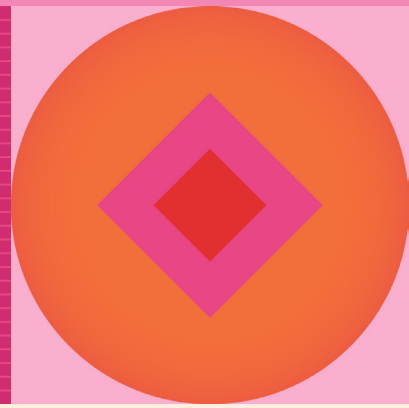




#RANZCOG24



# **RANZCOG** **Annual Scientific Meeting 2024**

Wellington, Aotearoa New Zealand | 12–16 October  
Partnerships in Practice

## Program and Speaker Brochure

[www.ranzcogasm.com.au](http://www.ranzcogasm.com.au)

# RANZCOG Annual Scientific Meeting 2024

Wellington  
Aotearoa New Zealand  
12–16 October  
Partnerships in Practice

## Organising Committee

### **Dr Per Kempe**

Chair, Organising Committee

### **Dr Judy Ormandy**

Chair, Scientific Program

### **Dr Charlotte Oyston**

Co-Chair, Scientific Program

### **Dr Daisy Wildash**

Social Program Convenor

### **Dr Bryony Simcock**

Gynaecology Representative

### **Dr Fiona Bach**

Urogynaecology Representative

### **Dr Simon McDowell**

Fertility Representative

### **Dr Jaynaya Marlow**

Maternal Fetal Medicine Representative

### **Dr Philip Suisted**

He Hono Wāhine Representative

### **Dr Kasey Tawhara**

He Hono Wāhine Representative

### **Dr Brendan Marshall**

RANZCOG Associate (Procedural/Adv Procedural)  
Representative

### **Dr Stephanie Luoni**

Trainee Representative

### **Dr Gillian Gibson**

RANZCOG President

## RANZCOG Staff

### **Ms Vase Jovanoska**

RANZCOG CEO

### **Mr Sudi Sekhar**

Deputy CEO, Executive Director, Membership and  
Engagement

### **Ms Catherine Cooper**

Executive Director, Aotearoa, Global Health and  
Foundation

### **Ms Sara MacArthur**

Manager, Events

### **Ms Kathleen McKinn**

Senior Coordinator, Events

### **Ms Lucy Krelle**

Event Coordinator

### **Ms Carly Moorfield**

Volunteer Program Coordinator

### **Ms Laura Collins**

Events and Professional Development Lead,  
Aotearoa New Zealand

### **Ms Bailey Parata Thomas**

Hauora Wāhine Māori Advisor

# Join us in Wellington Aotearoa New Zealand

**In 2024, the theme for the RANZCOG ASM revolves around the concept of “Partnerships in Practice.” This theme underscores the fundamental importance of partnerships across every facet of our roles as Obstetricians and Gynaecologists. Our connection with the women under our care stands as the most evident partnership we engage in as individual practitioners. Collaboratively, we make decisions regarding investigations and treatments in conjunction with our patients and their whānau (family).**

Throughout our professional journey, partnerships play an ongoing role, extending to colleagues within our department, hospital, organisation, nation, and College. These relationships play a pivotal role in shaping our growth and development. Many of us find ourselves navigating both the realms of science and daily clinical practice within these partnerships.

A vital partnership involves our engagement with Māori communities in Aotearoa New Zealand and First Nations people in Australia: this demonstrates our commitment to personal growth and genuine collaborations in leadership, decision-making, and governance.

Our collaboration extends to the wider community as well, emphasising the importance of listening and empowering patients and whānau to shape their own care. It is essential to understand the desires and preferences of women and

their whānau regarding the nature and location of their healthcare. Equally significant is recognising their reservations and gaining insights from their perspectives. In achieving this, we can reach the pinnacle of genuine partnership.

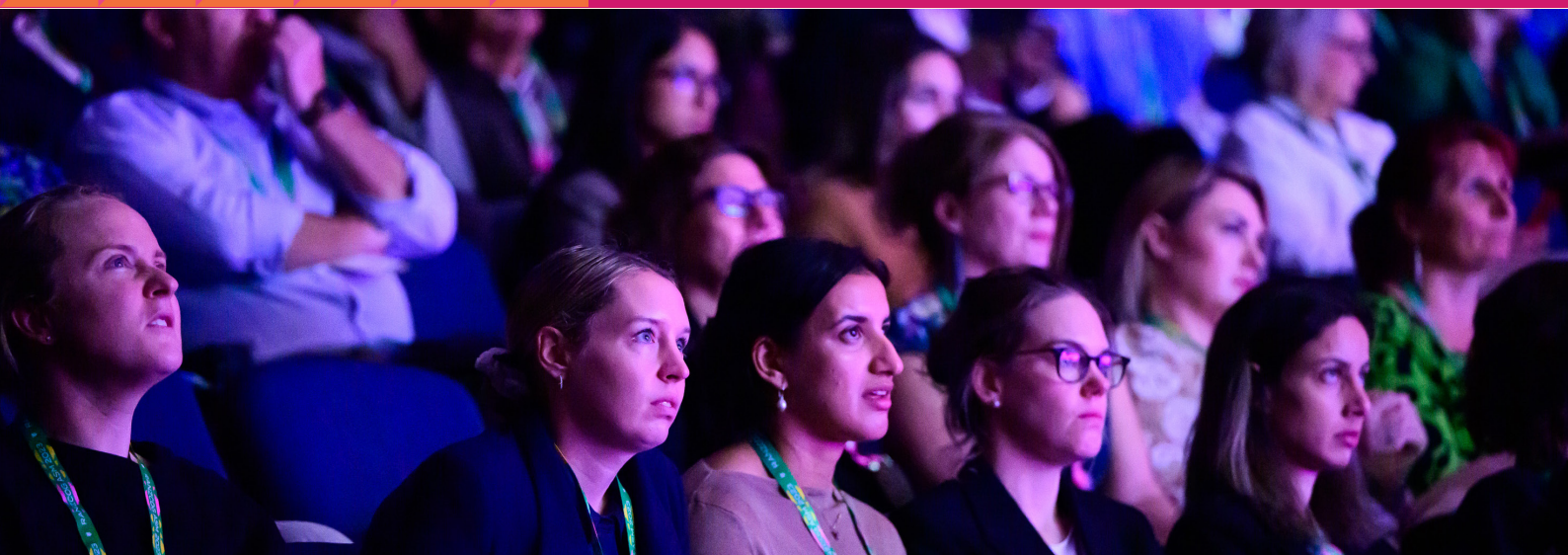
Establishing genuine partnerships in leadership, decision-making, and governance holds the key to fostering equitable outcomes for women across both our nations.

RANZCOG's affiliations with other medical colleges in Australia, Aotearoa New Zealand, and internationally further underscore our commitment, and through these interconnected networks, we collectively work to enhance women's healthcare on a global scale.

**Dr Per Kempe**  
RANZCOG ASM 2024 Organising Committee Chair



**We're looking forward to seeing everyone  
in Wellington, Aotearoa New Zealand**





## Keynote Speakers



### Michael Robson

#### Besins Healthcare Keynote Speaker

Dr Michael Robson is a distinguished medical professional, who earned his MBBS at St Thomas's Hospital, London, England, in 1982. He has a rich background in Obstetrics and Gynaecology, serving as a Consultant at Wycombe General Hospital, England, from 1995 to 2004, where he also held the position of Clinical Director. Later, he became the Master at The National Maternity Hospital in Dublin, Ireland, from 2005 to 2011. Currently, Dr Robson is a Consultant Obstetrician and Gynaecologist at the National Maternity Hospital in Dublin, overseeing the delivery of 8000 babies annually. His expertise lies in labor management, organizational aspects of labour ward, teaching, audit, and research, focusing on dystocic labour. Dr Robson also serves as the National Clinical Director for the development of a National Electronic Patient Record for maternity, neonates, and gynaecology in Ireland, and has developed an Intrapartum Audit Software Programme aligned with the Ten Group Classification System.

See Michael and Marie in:

**C2: General Obstetrics,**

Monday 14 October, 11.30–13.05

**P3: Partnering to Learn by Outcomes,**

Wednesday 16 October, 13.10–14.35

**C19: Labour and Birth Outcomes in Australia and**

New Zealand, Wednesday 16 October, 11.00–12.10

**C22: Labour and Birth Outcomes in Australia and**

New Zealand, Wednesday 16 October, 13.10–14.35

### Marie Vikström Bolin

#### Norman Beischer Medical Research Foundation Keynote Speaker

Dr Marie Vikström Bolin, MD, PhD, is a leading figure in Obstetrics and Gynaecology, currently serving as the Regional Clinical Director of Maternity Care in Västernorrland, Sweden. She plays a crucial role as a board member of the Swedish Society of Obstetrics and Gynaecology, overseeing clinical quality registries. Dr Vikström Bolin is deeply committed to advancing healthcare, contributing to the Swedish Pregnancy Registry and the Swedish National Quality Registry of Gynaecological Surgery. Her dedication extends to education and training, engaging with midwifery and medical students, co-authoring textbooks, and developing pelvic floor training programs. Additionally, she provides expert advice to the Swedish Agency for Health Technology Assessment and Assessment of Social Services, and contributes to projects aimed at reducing birth trauma in Sweden. Dr Vikström Bolin's expertise and commitment has greatly impacted maternal and reproductive healthcare in Sweden.



# Memorial Orators

## Karel Williams

### Alison Bush Memorial Orator

Karel Williams is a First Nations midwife based on Ngunawal Country (Canberra, ACT). Her family connections are to the palawa and Western Arrernte Nations. Karel is a passionate advocate for Birthing on Country models of care, culturally safe practices, and increasing the First Nations midwifery workforce. Currently, Karel is a Director of the Rhodanthe Lipsett Indigenous Midwifery Trust and advises the ACT Department of Health on Midwifery in Focus and Birthing on Country initiatives. Karel's dedication earned her a Distinguished Alumni Award for Excellence in Health from University of Canberra in 2019, and she is now pursuing a PhD on restorative practices in First Nations maternity care.

See Karel's Oration in:

**P1: Partnerships with First Nations People in Australia, and Māori in Aotearoa New Zealand, Monday 14 October, 09.45–11.10**



## Karaponi Okesene-Gafa

### Arthur Wilson Memorial Orator

Moananu Dr Karaponi Okesene-Gafa is a distinguished Senior Lecturer in the Department of Obstetrics and Gynaecology at the University of Auckland. Moananu Dr Okesene-Gafa has made significant contributions to the field of women's health, both in academia and clinical practice.

See Karaponi's Oration in:

**P2: Partnerships with Community, Tuesday 15 October, 08.25–11.05**



## Kati Taghavi

### Ella Macknight Memorial Orator

Dr Kati Taghavi holds an MD-PhD in epidemiology, focusing on cervical cancer prevention among women living with HIV (WLWH) in sub-Saharan Africa. Her research addresses gaps in screening programs and explores novel screening methods, notably the Gynocular™. She continues her work with funding for long-term follow-up studies in Zambia and investigates treatment efficacy among WLWH in Zimbabwe. Additionally, Dr Taghavi has consulted on cervical screening guidelines for the WHO and is involved in the European Commission Initiative on Cervical Cancer (EC-CvC).

See Kati's Oration in:

**P2: Partnerships with Community, Tuesday 15 October, 08.25–11.05**





pregnant women

experience a threatened miscarriage<sup>1,2</sup>

**Find out how you can help**

Scan the QR code to access latest updates and resources.

[besins-healthcare.com.au/support-network](https://besins-healthcare.com.au/support-network)



Initial presentation of threatened miscarriage often occurs in general practice.<sup>2</sup> Utrogestan should be initiated at the first sign of unexplained vaginal bleeding during the first trimester of pregnancy and continued to at least the 16th week of gestation.<sup>3</sup>

**PBS Information:** Authority required (STREAMLINED) for Assisted Reproductive Technology and for the prevention of Preterm Birth. Refer to PBS Schedule for full authority. This product is not listed on the PBS for treatment of Threatened Miscarriage.

Before prescribing please review the Product Information available at [besins-healthcare.com.au/PI](https://besins-healthcare.com.au/PI) or telephone 1800 BESINS (237 467).

**References:** 1. Victoria State Government, Department of Health, Better Health Channel. Pregnancy – bleeding problems. Available at <https://www.betterhealth.vic.gov.au/health/healthyliving/pregnancy-bleeding-problems>. Accessed January 2023. 2. Breeze C. Aus Fam Phys 2016;45(5):283–86. 3. Utrogestan (micronised progesterone) Product Information, last accessed January 2024. Utrogestan 200 (vaginal use – micronised progesterone) Indication: luteal phase support during assisted reproduction; treatment of threatened miscarriage in women with a history of ≥ 3 previous miscarriages and women with < 3 miscarriages who have a reduced chance of future pregnancy. Benefit of treatment was greatest in women with ≥ 3 previous miscarriages; prevention of preterm birth in women with singleton pregnancy who have a short cervix (midtrimester sonographic cervix ≤25 mm) and/or a history of spontaneous preterm birth; Dosage and Use: during luteal phase support in controlled ovarian cycles 600 mg/day as 3 divided doses from day of embryo transfer until 7th week of pregnancy and not later than the 12th week. For treatment of threatened miscarriage, usual dose is 400 mg twice a day (morning and night). Treatment should be initiated at the first sign of vaginal bleeding during the first trimester of pregnancy and should continue to at least the 16th week of gestation. For prevention of preterm birth, usual dose is 200 mg/day, recommended at bedtime. Treatment can be initiated during the 2nd trimester (16–24 gestational weeks) and is to be continued to the end of the 36th week of gestation or until delivery. Each capsule of Utrogestan must be inserted deep into the vagina. The average dosage is 200 to 800 mg of progesterone per day administered vaginally. This may be increased, depending on the patient's response. Contraindications: known allergy/hypersensitivity to progesterone/excipients; severe hepatic dysfunction; undiagnosed vaginal bleeding; known missed abortion/ectopic pregnancy; mammary/genital tract carcinoma; thromboembolic disorders; thrombophlebitis; cerebral haemorrhage; porphyria. Special Warnings and Precautions: should only be used by vaginal route for the recommended timeframes for each indicated use (pregnancy Cat A); cytolytic liver damage/gravidic cholestasis exceptionally reported during 2nd and 3rd trimesters of pregnancy; not a contraceptive; uterine bleeding cause must be established before use; discontinue use upon diagnosis of missed abortion; use caution in conditions affected by fluid retention and history of depression, diabetes, hepatic dysfunction, migraine, venous thrombosis, photosensitivity and hypersensitivity to soya lecithin; not to be used during lactation; may effect laboratory test results; the evidence that Utrogestan reduces the risk of preterm birth in women with a short cervix with twin/multiple pregnancy and/or a history of spontaneous preterm birth is limited. Interactions: caution with P450 enzyme inducers and inhibitors; bioavailability may be reduced by smoking and increased by alcohol abuse. Very Common and Common Adverse Effects: none noted with vaginal administration in clinical trials. Utrogestan® is a registered trademark of Besins Healthcare. Besins Healthcare Australia Pty Ltd. ABN 68 164 882 062. Suite 5.02, 12 Help St, Chatswood NSW 2067. Office phone (02) 9904 7473. For medical information call 1800 BESINS (237 467). [www.besins-healthcare.com.au](https://www.besins-healthcare.com.au) UTR-2064 Prepared May 2024.



## **Advancing Women's Reproductive Health and Infant Well-being**

The Norman Beischer Medical Research Foundation is dedicated to enhancing the reproductive health of women and the well-being of their babies and infants. We actively support research in obstetrics and the prevention, control, and treatment of gynaecological diseases. By funding clinical and scientific research from leading and emerging researchers, we aim to educate and inform medical practice both in Australia and globally.

### **The Norman Beischer Research Fellowships**

Our prestigious Research Fellowships offer an outstanding clinician researcher the chance to receive a \$660,000 award over three years. These fellowships are designed for early-to-mid-career researchers who have completed their PhD within the last seven years. Applicants must be working in areas of interest to the Foundation and affiliated with an institution in Victoria. The clinicians targeted by the Fellowship program will be Obstetricians, Neonatologists and Gynaecologists or clinicians supporting healthy obstetric outcomes or dealing with issues associated with gynaecology or neonatology.

### **Innovation Grants**

Our Innovation Grants provide seed funding for highly innovative research projects with significant clinical impact potential. These grants can pave the way for major grant applications to institutions like the NHMRC and the Medical Futures Fund. Open to researchers at any career stage within Victoria, these grants are typically awarded for one year, with possible extensions.

### **Grant Amount**

We will award approximately nine Innovation Grants per year, each up to \$73,000.

### **Contact Information**

For more information on Fellowships or Innovation Grants, please visit [nbmrf.org.au](http://nbmrf.org.au) or contact:

Andrew Brookes, Executive Director  
Email: [admin@nbmrf.org.au](mailto:admin@nbmrf.org.au)

# Pre-Meeting Workshops and Satellite Meetings

## Cultural Safety Hīkoi - A Journey of Pōneke

09.00–15.30  
Saturday 12 October

**Suitable for:** RANZCOG Fellows, RANZCOG Associates (Procedural/Adv Procedural), CPD Affiliates, RANZCOG Trainees, Nurses and Midwives  
**Registration:** \$350  
**Includes:** Morning Tea, Lunch  
**CPD:** 2 hours Educational Activities, 2 hours Performance Review

Experience a unique journey through Pōneke (Wellington) with renowned RANZCOG Kaumātua, Luke Crawford, and He Hono Wāhine. This immersive workshop is designed to enrich your understanding of cultural safety, connection to whenua (land), local iwi pūrākau (myth, story), and Māori history.

For our Australian delegates – this hīkoi is all about levelling up your cultural safety and becoming even better at patient-centred care. You'll be diving into the unique world of Pōneke Māori culture and history, but the insights you'll hear apply to all Indigenous peoples.

## Gynaecological Skills Workshop

08.30–12.30  
Saturday 12 October

**Suitable for:** RANZCOG Associates (Procedural/Adv Procedural), GPs, RANZCOG CPD Affiliates  
**Registration:** \$450  
**Includes:** Morning Tea  
**CPD:** TBC

Attention GPs and RANZCOG Associates (Procedural/Adv Procedural)! Bolster your scope of practice with our specially curated Gynaecological Skills Workshop Program. The program is designed to provide targeted professional development opportunities, imparting you with practical skills to enhance your scope of practice.

## OASI Workshop

13.00–17.00  
Saturday 12 October

**Suitable for:** RANZCOG Associates (Procedural/Adv Procedural), GPs, RANZCOG CPD Affiliates, RANZCOG Trainees, RANZCOG Fellows  
**Registration:** \$550  
**Includes:** Afternoon Tea  
**CPD:** 3 hours Educational Activities, 1 hour Performance Review

Perineal repair, a critical aspect of obstetric and gynaecological care and throughout this workshop, participants will engage in hands-on training, interactive discussions, and comprehensive demonstrations to develop a deep understanding of perineal anatomy, recognise different types of perineal trauma, and master the techniques for effective repair.

## FSEP Workshop

09.00–16.30  
Sunday 13 October

**Suitable for:** RANZCOG Fellows, RANZCOG Associates (Procedural/Adv Procedural), CPD Affiliates, RANZCOG Trainees, Junior Doctors, Nurses and Midwives  
**Registration:** \$725  
**Includes:** Morning Tea, Lunch, Afternoon Tea  
**CPD:** 3 hours Educational Activities, 2 hours Outcome Measurement, 1.5 hours Performance Review

Unlock a deeper understanding of cardiotocography and enhance your skills with our Full FSEP Workshop Program. Structured to cumulatively build knowledge, this workshop is designed to empower clinicians engaged in antenatal and intrapartum care. Don't miss this opportunity to advance your skills and earn essential CPD hours in Outcome Measurement and Performance Review.

## RANZCOG Guideline Development Workshop

13.00–17.00  
Saturday 12 October

**Suitable for:** RANZCOG Fellows, RANZCOG Associates (Procedural/Adv Procedural), RANZCOG Educational Affiliates and RANZCOG Trainees.  
**Registration:** \$350  
**Includes:** Afternoon Tea  
**CPD:** TBC

RANZCOG currently has over 80 clinical statements. In a survey in 2021 nearly 80% of RANZCOG members used statements at least monthly. Join us to learn about RANZCOG's statement and guideline development processes. Receive points for CME (EA 4 hours) and potentially OM domain (up to 4 hours) if you complete a post workshop task (appraising a systematic review using the AMSTAR II tool and/or a guideline using the AGREE II tool), as well as work alongside colleagues from Australia and Aotearoa New Zealand.

Workshop numbers are limited, so early registration is encouraged. Each workshop is subject to sufficient attendance and may be cancelled if minimum numbers are not reached: in this event, fees paid will be fully refunded. Workshops are subject to change and are correct at time of printing.



## Case Based Discussion for RANZCOG Associate (Procedural/Adv Procedural) and GPs

08.30–12.30

Sunday 13 October

**Suitable for:** RANZCOG Associates (Procedural/Adv Procedural), GPs, RANZCOG CPD Affiliates

**Registration:** \$350

**Includes:** Morning Tea

**CPD:** 30 minutes Educational Activities, 2 hours Outcome Measurement, 1 hour Performance Review

Unlock a world of insights in our dynamic half-day workshop designed for RANZCOG Associates (Procedural/Adv Procedural) and GPs working in private practice, locum positions, or rural areas. Dive into real-life cases, aimed to enhance your problem-solving skills. You will engage in in-depth discussion of patient history, clinical findings, and diagnostic tests.

## Case Based Discussion for RANZCOG Fellows

13.00–17.00

Sunday 13 October

**Suitable for:** RANZCOG Fellows

**Registration:** \$350

**Includes:** Afternoon Tea

**CPD:** 30 minutes Educational Activities, 2 hours Outcome Measurement, 1 hour Performance Review

Engage with your peers and experts with our workshop designed to facilitate knowledge sharing, critical thinking, problem-solving and professional development by analysing real-life cases in the field of Obstetrics and Gynaecology.

## Hot and Cold Debrief Workshop

08.30–12.30

Sunday 13 October

**Suitable for:** RANZCOG Fellows, RANZCOG Trainees, RANZCOG CPD Affiliates, Nurses and Midwives

**Registration:** \$350

**Includes:** Morning Tea

**CPD:** TBC

In this interactive workshop, we'll delve into the effective use of "hot" and "cold" debriefs to support your team in critical moments. A "hot debrief" is a structured, immediate conversation following a critical event, focusing on psychological support. It allows staff to express emotions, receive validation, and offer mutual support. Events such as major maternal or neonatal resuscitation, neonatal or maternal death, peripartum hysterectomy, or traumatic births may prompt a hot debrief. In contrast, a "cold debrief" is a more formal, clinical narrative of a critical event. It focuses on clarifying events, education, and quality improvement. While the primary focus is on hot debriefs, we will touch briefly on cold debriefs, comparing and contrasting the two to ensure clarity on when and how to conduct each type effectively with your team.

## PVOGS Laparoscopic Skills Workshop

12.30–17.30

Sunday 13 October

**Suitable for:** Junior Doctors, Medical Students

**Registration:** \$150

**Includes:** Afternoon Tea

**CPD:** TBC

Get ready for an immersive and interactive experience at the upcoming PVOGS ANZ workshop! Our face-to-face session promises to blend engaging presentations with hands-on learning like never before. Kickstarting the session is a dynamic 45-minute presentation led by one of our esteemed advanced laparoscopic surgeons. Dive into the world of laparoscopic surgery with a comprehensive introduction that sets the stage for what's to come. Our practical component is divided into two exciting segments: 'Basic Laparoscopic Skills' and 'More Advanced Laparoscopic Skills.'

## Emotional Intelligence Workshop

13.00–17.30

Sunday 13 October

**Facilitator:** Sharee Johnson

**Suitable for:** RANZCOG Associates (Procedural/Adv Procedural), GPs, RANZCOG CPD Affiliates, RANZCOG Trainees, Nurses and Midwives

**Registration:** \$450

**Includes:** Afternoon Tea

**CPD:** 2 hours Educational Activities, 1.5 hours Performance Review

Discover the transformative power of emotional intelligence and compassion under the guidance of the extraordinary Sharee Johnson. In this illuminating workshop, delve into the intricacies of stress responses, real-time self-care, the profound connection between emotions and the physical body, and the origin of our emotional landscapes.

## UGSA Presents Build Your Own Pelvis: Hands-On Clay Pelvic Anatomy Workshop

08.30–12.30

Sunday 13 October

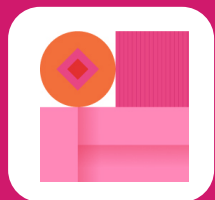
**Suitable for:** RANZCOG Fellows, RANZCOG Associates (Procedural/Adv Procedural), CPD Affiliates, Trainees, General Practitioners, Allied Health Professionals, Nurses and Midwives

**Registration:** \$450

**Includes:** Morning Tea

**CPD:** TBC

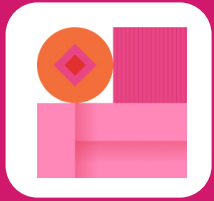
Presented by the Urogynaecology Society of Australia, this interactive session will see participants teaming up to craft a detailed pelvis using clay and assorted materials, starting with the foundational bony structure. Delve deeper as you construct ligamentous connections, muscle groups, pelvic organs, and nerves, gradually forming a comprehensive depiction of the pelvis.



# Program Overview

Monday 14 October 2024

Time	Plenary	Concurrent 2	Concurrent 3
09.00–09.30	ASM Welcome <b>Peter Jackson, Luke Crawford, Pelle Kempe and Gillian Gibson</b>		
09.30–11.00	Plenary One: Partnerships with First Nations People in Australia, and Māori in Aotearoa New Zealand Chairs: <b>Kasey Tawhara and Phil Suisted</b>		
09.30–09.40	Session Welcome and Introductions		
09.40–10.00	Partnerships with Tangata Whenua/ People of the Land <b>David Tipene-Leach</b>		
10.00–10.20	Honouring First Nations Health Practices <b>Melanie Briggs</b>		
10.20–10.40	Alison Bush Memorial Orator (Introduced by Marilyn Clarke) <b>Karel Williams</b>		
10.40–11.00	Panel Discussion: Partnerships to Achieve Health Equity for First Nations Peoples in Australia and Aotearoa New Zealand (How to Close the Gap and Te Tiriti) <b>Melanie Briggs, David Tipene-Leach and Karel Williams</b>		
11.00–11.30	Morning Tea and Exhibition	Morning Tea and Exhibition	Morning Tea and Exhibition
11.30–13.00	Concurrent One: A Broader View: RANZCOG's Relationships Across the Globe Chair: <b>Vijay Roach</b>	Concurrent Two: General Obstetrics Chair: <b>Pelle Kempe</b>	Concurrent Three: Gynaecological Oncology Chair: <b>Bryony Simcock</b>
11.30–11.40	Session Welcome and Introductions	Session Welcome and Introductions	Session Welcome and Introductions
11.40–12.00	Asia And Oceania Federation Of Obstetrics And Gynaecology Indonesian Society Of Obstetricians And Gynecologists	Nurturing Better Partnerships with Midwives <b>Jennifer Green</b>	What can a Robot Offer in Gynaecological Oncology? <b>Susannah Mourton</b>
12.00–12.20	Federation Of Obstetric And Gynaecological Societies Of India Obstetrical And Gynaecological Society Of Malaysia	Auditing Induction of Labour <b>Michael Robson</b> (Supported by Besins Healthcare)	Epithelial Ovarian Cancer in 2024 <b>Toni Jones</b>
12.20–12.40	European Board and College of Obstetrics and Gynaecology The American College of Obstetricians and Gynecologists	Outpatient Induction of Labour <b>Marie Vikstrom-Bolin</b> (Supported by Norman Beischer Medical Research Foundation)	Rural Relationships in Cancer Care <b>Ken Jaaback</b>
12.40–13.00	The Society of Obstetricians and Gynaecologists of Canada Royal College of Obstetricians and Gynaecologists	Labour and Birth Interventions and Outcomes in relation to BMI <b>Stephanie Luoni</b>	HPV/LS: Does it Matter? <b>Lois Eva</b>
13.00–14.00	Lunch and Exhibition	Lunch and Exhibition	Lunch and Learn



# Program Overview

Monday 14 October 2024

Time	Plenary	Concurrent 2	Concurrent 3
14.00–15.30	Concurrent Four: Pacific Medicine: Working with our Pacific Family Chair: <b>Judy Ormandy</b>	Concurrent Five: Maternal Fetal Medicine (Supported by the Norman Beischer Medical Research Foundation) Chair: <b>Jaynaya Marlow</b>	Concurrent Six: Urogynaecology Chair: <b>Fiona Bach</b>
14.00–14.10	Session Welcome and Introductions	Session Welcome and Introductions	Session Welcome and Introductions
14.10–14.30	Addressing Health Disparities in Pacific Communities <b>Karaponi Okesene-Gafa</b>	Palliative Care Models for High-Risk Pregnancies <b>Amanda Evans</b>	Urology for the Gynaecologist <b>Hazel Ecclestone</b>
14.30–14.50	Translational Research Projects and Studies in Women's Health <b>Philip Cellich</b>	Advances in Fetal Monitoring <b>Fiona Brownfoot</b> (Supported by the Norman Beischer Medical Research Foundation)	Anatomical Considerations for the Development of Uterine and Vaginal Prolapse <b>Bernard Haylen</b>
14.50–15.10	Access to Quality Care in Fiji <b>Ahalya Sathiyaselvan</b>	Advances in Fetal Imaging: AI Technology Trial <b>Jade Lodge</b>	Continence Procedures: What are our Options and how do we Choose them? <b>Xiamin Liang</b>
15.10–15.30	Maternal Death in Tonga <b>Rajat Gyaneshwar &amp; Maake Tuupou</b>	Ethnic Disparities in Congenital Cardiac Disease <b>Simone Watkins</b>	Sexual Health and Urogynaecological Disorders: Addressing Patient Concerns <b>Jill Wood</b>
15.30–16.00	Afternoon Tea and Exhibition	Afternoon Tea and Exhibition	Afternoon Tea and Exhibition
16.00–17.15	Concurrent Seven: Antenatal Care Chair: <b>Jaynaya Marlow</b>	Concurrent Eight: The Trainee Perspective Chair: <b>Stephanie Luoni and Brendan Marshall</b>	Concurrent Nine: Free Communications
16.10–16.30	THOR (The Hands of Rescue): Baby Bundles <b>Barry Kirby</b>	Transitioning Through Training <b>Graham Slaney</b>	Free Communication Presentation One
16.30–16.50	SGA Guidelines: Comparison of International Guidelines <b>Ngaire Anderson</b>	What Do You Really Need to Know to Be an SMO <b>Rebecca Crabbe</b>	Free Communication Presentation Two
16.50–17.10	Whānau and Providers Working Together to Improve Preterm Birth Outcomes: The Carosika Collaborative <b>Katie Groom and Tina Allen-Mokaraka</b> The Carosika Collaborative	Professional Supervision for Training and Beyond <b>Shaystah Dean</b>	Free Communication Presentation Three
17.10–17.15	Karakia	Karakia	Free Communication Presentation Four
17.15–18.30	Welcome Reception	Welcome Reception	Free Communication Presentation Five
			Free Communication Presentation Six

## RANZCOG 2024 Annual General Meeting

16.30–17.30

The RANZCOG 2024 Annual General Meeting will take place at the ASM.  
RANZCOG Fellows are invited to attend this important meeting.

# By your side more than ever before

Supporting you with a range of products and services from medical indemnity, life and health insurance, to practice solutions, lending and legal advice.



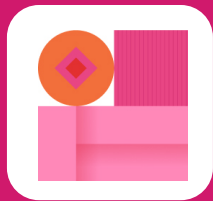
Dr James Kemper  
Obstetrics and  
gynaecology registrar



Find out more  
[avant.org.au](https://avant.org.au) | 1800 128 268

IMPORTANT: Professional indemnity insurance products are issued by Avant Insurance Limited, ABN 82 003 707 471, AFSL 238 765. Please read the relevant Product Disclosure Statement or policy wording, available at [avant.org.au](https://avant.org.au) before deciding whether to acquire, or continue to hold the product. Life insurance advisory services, health insurance, practice management software, financial services and legal advisory services are provided by different companies within the Avant Mutual Group of companies. For more information, visit [avant.org.au](https://avant.org.au). MJN1477 04/24 (DT-3779)



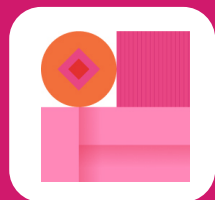


# Program Overview

Tuesday 15 October 2024

Time	Plenary	Concurrent 2	Concurrent 3
07.45–08.25	Breakfast Session One	Breakfast Session Two	Breakfast Session Three
08.30–11.00	Plenary Two: Partnerships with Community Chair: <b>Phil Suisted</b>		
08.30–08.40	Mihi Whakatau <b>Phil Suisted and Wendy Dallas-Katoa</b>		
08.40–08.50	Session Welcome and Introductions		
08.50–09.10	Community Engagement: Empowering Families for Preventative Care <b>Glenn Colquhoun</b>		
09.10–09.30	Collaboration for Accessible and Inclusive Healthcare <b>George Parker</b>		
09.30–09.50	Arthur Wilson Memorial Oration <b>Karaponi Okesene-Gafa</b>		
09.50–10.10	Ella Macknight Memorial Oration <b>Kati Taghavi</b>		
10.10–10.30	Immediate Past President's Oration <b>Benjamin Bopp</b>		
10.30–11.00	Morning Tea and Exhibition	Morning Tea and Exhibition	Morning Tea and Exhibition





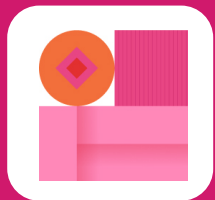
# Program Overview

Tuesday 15 October 2024

Time	Plenary	Concurrent 2	Concurrent 3
11.00–12.30	Concurrent Ten: #empowered: Informing and Empowering Through Social Media Chair: <b>Charlotte Oyston</b>	Concurrent Eleven: Abortion Chair: <b>Anna Hudspith and Rachel Rapkin</b>	Concurrent Twelve: Pelvic Pain Chair: <b>Fiona Bach</b>
11.00–11.10	Session Welcome and Introductions	Session Welcome and Introductions	Session Welcome and Introductions
11.10–11.30	Social Media to Empower and Inform - A New Zealand Perspective <b>Morgan Edwards</b>	Second Trimester Abortion Provision: Who, What, Where, When, How, Why? <b>Paddy Moore</b>	Trauma Informed Care <b>Simon Goss</b>
11.30–11.50	Highs, Lows, Wins and Challenges - My Experience in Digital and Online Communication <b>Danielle Jones</b>	Abortion Ethics: A Values Clarification Session <b>Angela Ballantyne</b>	Pelvic Mesh <b>Bernadette Brown</b>
11.50–12.10	Empowerment Beyond Borders-Delivering Women's Health Education across India and it's Subcontinents <b>Sumaiya Sayed</b>	Māori Perspectives on Abortion <b>Melanie Gibson, Tania Slater and et al</b>	Pelvic Pain: Interdisciplinary Collaborative Care <b>Karen Joseph</b>
12.10–12.30	Fighting Misinformation <b>Siouxie Wiles</b>	Disability and Abortion <b>Brigit Mirfin-Veitch</b>	Physical Therapy and Pelvic Pain Management: A Team Approach <b>Liz Childs</b>
12.30–13.30	Lunch and Exhibition	Lunch and Exhibition	Lunch and Learn
13.30–14.55	Concurrent Thirteen: Support Networks in Medicine: Whānau and Caring for the Carer Chair: <b>Daisy Wildash</b>	Concurrent Forteen: Obesity through the Lifespan Chair: <b>Bryony Simcock and Stephanie Luoni</b>	Concurrent Fifteen: Training and Education Chair: <b>Philip Suisted</b>
13.30–13.40	Session Welcome and Introductions	Session Welcome and Introductions	Session Welcome and Introductions
13.40–13.55	Balancing Family Life and Demands of Medical Practice <b>Sharee Johnson</b>	Effects of Ultra-Processed Food Inutero on Mental Health of Offspring <b>Julia Rucklidge</b>	Evidence Based Training <b>Andrew Percy</b>
13.55–14.10		Diamond Clinic <b>Glyn Teale</b>	Prevocational Exposure to O&G <b>Judy Ormandy</b>



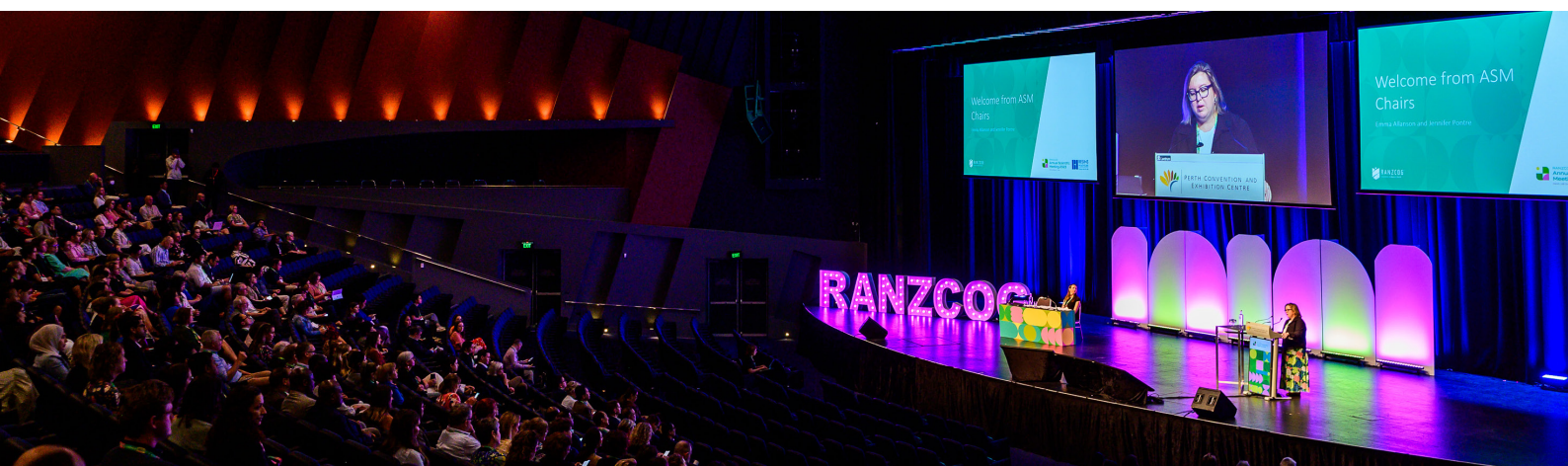


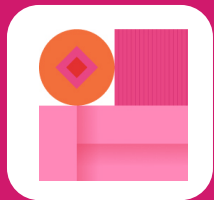


# Program Overview

Tuesday 15 October 2024

Time	Plenary	Concurrent 2	Concurrent 3
14.10–14.25	Panel Session: The Impact of Supportive Families on Healthcare Professionals <b>Partners of RANZCOG Fellows and Trainees, Chaired by Sharee Johnson</b>	Obesity and Endometrial Cancer <b>Sathana Ponnampalam</b>	The Benefits of Longitudinal Training <b>Sarah Rennie</b>
14.25–14.40		Solutions for Obesity: Pharmacology Agents for Weight Loss <b>Rosemary Hall</b>	The Benefits of Expanded Training from a Consumer Perspective <b>Tessa Kowaliw</b>
14.40–14.55		Advocacy Health Coalition Aotearoa: How can we change the Status Quo? <b>Lisa Te Moenga</b>	Ongoing Fellow Training: Operating with a Peer - A Conversation
14.55–15.30	Afternoon Tea and Exhibition	Afternoon Tea and Exhibition	Afternoon Tea and Exhibition
15.20–17.00	Concurrent Sixteen: LGBTQIA+ Health: Gender and Diversity Chair: <b>Jen Randle and Akira Lefevre</b>	Concurrent Seventeen: Colposcopy: Outside the Box Chair: <b>Daisy Wildash</b>	Concurrent Eighteen: Free Communications
15.30–15.40	Session Welcome and Introductions	Session Welcome and Introductions	Session Welcome and Introductions
15.40–16.00	Learning from Lived Experience: LGBTQIA+ Patients and O&G Services	HPV Primary Screening in Aotearoa New Zealand and Australia <b>Nadine Riwai and Jared Watts</b>	Free Communication Presentation Seven Free Communication Presentation Eight
16.00–16.20	Service Level Approaches to Improving LGBTQIA+ Experiences	Collaborating with Community <b>Judy Ormandy</b>	Free Communication Presentation Nine Free Communication Presentation Ten
16.20–16.40	Cultural Safety and your LGBTQIA+ Colleagues	Colposcopy in a Rural Setting <b>Lisa Whop</b>	Free Communication Presentation Eleven Free Communication Presentation Twelve
16.40–16.50	Karakia	Karakia	Karakia



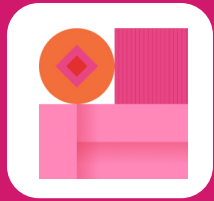


# Program Overview

Wednesday 16 October 2024

Time	Plenary	Concurrent 2	Concurrent 3
07.45–08.25	Breakfast Session One	Breakfast Session Two	Breakfast Session Three
08.30–10.30	Plenary Three: Partnering to Learn by Outcomes: Chair: <b>Pelle Kempe</b>		
08.30–08.40	Mihi Whakatau		
08.40–08.50	Session Welcome and Introductions		
08.50–09.10	Australasian Pelvic Floor Procedure Registry <b>Susannah Ahern</b>		
09.10–09.30	Quality Improvement through Continuous Outcome Analysis, the Swedish Gynaecology and Pregnancy Quality Registries <b>Marie Vikstrom Bolin</b>  (Supported by Norman Beischer Medical Research Foundation)		
09.30–09.50	The Ten Group Classification System: What is it and how Might it Make a Difference? <b>Michael Robson</b>  (Supported by Besins Healthcare)		
09.50–10.30	Panel Discussion <b>Michael Robson, Marie Vikstrom Bolin and Susannah Ahern</b>		
10.30–11.00	Morning Tea and Exhibition	Morning Tea and Exhibition	Morning Tea and Exhibition
11.00–12.10	Concurrent Nineteen: Labour and Birth Outcomes in Australia and New Zealand Chair: <b>Pelle Kempe and Michael Robson</b>	Concurrent Twenty: Sexual and Reproductive Health Chair: <b>Judy Ormandy</b>	Concurrent Twenty One: International Research and Trials: Using Networks at Different Levels Chair: <b>Charlotte Oyston</b>
11.00–11.10	Session Welcome and Introductions: Interpreting the Ten Group Classification System <b>Michael Robson</b>	Session Welcome and Introductions	Session Welcome and Introductions
11.10–11.30	Alice Springs Hospital Caboolture Hospital Whanganui Hospital Middlemore Hospital Maitland Hospital Whakatane and Tauranga Hospitals Timaru Hospital Westmead Hospital Auckland City Hospital Midcentral Hospital	Syphilis Outbreak <b>Julia Scott</b>	Te Puna Wairua <b>Bev Lawton</b>
11.30–11.50		Changes to Gray's Anatomy: Chapter 75, Female Reproductive System <b>Bernard Haylen</b>	Transforming Clinical Research with Adaptive Platform Trials: Improve Preterm Birth Outcomes for Preterm Infants: <b>Clare Whitehead</b>
11.50–12.10		I'm not Paid to give you a TED Talk on how my Trans Body Works <b>Sara Filoche</b>	What's New in Systematic Reviews? <b>Cynthia Farquhar</b>





# Program Overview

## Wednesday 16 October 2024

Time	Plenary	Concurrent 2	Concurrent 3
12.10–13.00	Lunch and Exhibition	Lunch and Exhibition	Lunch and Learn
13.00–14.30	Concurrent Twenty Two: Labour and Birth Outcomes in Australia and New Zealand Chair: <b>Pelle Kempe and Michael Robson</b>	Concurrent Twenty Three: Regional and Rural Health Chair: <b>Brendan Marshall</b>	Concurrent Twenty Four: Reproductive Endocrinology and Infertility Chair: <b>Simon McDowell</b>
13.00–13.10	Session Welcome and Introductions: Interpreting the Ten Group Classification System <b>Marie Bolin</b>	Session Welcome and Introductions	Session Welcome and Introductions
13.10–13.35	Joondalup Health Campus Royal Women's Hospital Liverpool Hospital Mater Hospital Nelson/Marlborough - Wairau Hospital Otago Hospital Royal North Shore Hospital Hornsby Ku-Ring-Gai Hospital Sunshine Hospital (Western Health) Tweed Byron Health Service Royal Hobart Hospital Tairāwhiti Hospital Lyle McEwin Hospital Gisborne Hospital Northern Region Nelson Hospital Royal Brisbane and Women's Hospital	Flying O&G <b>Adam Bush</b>	Primary Level Fertility Care: When to Seek Help, Basic Testing, Optimising Chances at Home <b>Sarah Wakeman</b>
13.35–14.00		British Columbia RSON and ROAM	Secondary Level Fertility Care: Reproductive Surgery, Ovulation Induction, when to Refer <b>Leigh Searle</b>
14.00–14.25		Telehealth in Pregnancy Care <b>Kirsten Palmer</b>	Tertiary Level Fertility Care: IVF, Insemination, PGTA, PGTM, Donor Programs <b>Andrew Murray</b>
14.30–14.50	Closing of the ASM		
14.30–14.40	Presentation of Awards <b>Gillian Gibson</b>		
14.40–14.45	Launch of the RANZCOG ASM 2025 <b>Louise Hull</b>		
14.45–14.50	Final Comments including Karakia <b>Pelle Kempe</b>		







"If someone had sat down with me and explained how alcohol could harm my baby, I would have given up sooner."

**Mother of a child with Fetal Alcohol Spectrum Disorder (FASD)**



**Advise women who are pregnant or trying to conceive that they should not drink alcohol, and provide support to help them achieve this.**

Find out more about the free and accredited training available online. This provides up-to-date information and support to help you optimise pre-conception and pregnancy care.

**every moment  
matters**

**fare.**

This project is funded and endorsed by the Australian Government.



Learn more at:

**[everymomentmatters.org.au](http://everymomentmatters.org.au)**





# Wellywood ASM Gala Dinner

19.00–late  
Tuesday 15 October

Venue: To Be Advised

Cost: \$195

Includes: 3 course dinner, signature cocktails  
and beverages

Dress code: Guests are requested to wear  
attire befitting the occasion's elegance and  
sophistication.

Lights, camera, action! Get ready for a night of  
Hollywood glamour right here in Wellington at our  
exclusive gala dinner: Wellywood! Immerse yourself  
in the allure of Wellywood as you sip on gin cocktails  
crafted by local distilleries, perfectly complementing  
the elegance of the evening. Indulge your senses  
as you dine at one of Wellington's best venues!  
Get ready to hit the dance floor and groove to the  
sensational sounds of an amazing band, complete  
with a horn section that will have you dancing until  
the stars fade away.

## Welcome Reception

17.30–18.30  
Monday 14 October

Venue: Takina Wellington Convention Centre, Exhibition Hall  
Cost: Free for Delegates. Guest tickets available for purchase.  
Includes: Drinks and canapés.  
Dress code: Smart casual.

After a day filled with enriching scientific sessions, unwind  
with colleagues and make new connections over delectable  
canapés and refreshing drinks.





# Out and About in Wellington



## 10% OFF DAY TOUR

### Zealandia Eco-Sanctuary Tour

See some of New Zealand's rarest native animals thriving in the wild and discover 80 million years of natural history.

For 10% discount on Zealandia By Day tour, use code: **TAKINA10**

Valid for online bookings until 31 October 2024

[www.visitzealandia.com](http://www.visitzealandia.com)



## 10% OFF DAY TOUR

### Te Papa Tour

The perfect way to get an overview of Te Papa's highlights, Māori treasures, and New Zealand history.

For 10% discount on Introducing Te Papa Tour, use code: **TEPAPATOURS24**

Valid for online bookings until 31 December 2024

[www.tepapa.govt.nz](http://www.tepapa.govt.nz)



## 20% OFF WORKSHOP TOUR

### WĒTĀ Workshop

Visit the workshop that crafts physical effects for some of the world's most renowned films and TV shows.

For 20% discount on adult tours, use code: **EXPLOREWLG24**

Valid for online bookings until 31 December 2024

[www.wetaworkshop.com](http://www.wetaworkshop.com)

## 10% OFF FACTORY TOUR

### Wellington Chocolate Factory

Learn all about the chocolate-making process, right from bean to bar, and make your own chocolate bars.

For 10% off any tour, use code: **WLGNZ2024**

Valid for online bookings until 23 December 2024

[www.wcf.co.nz](http://www.wcf.co.nz)

Scan for more information.



## Free Activities

### City Gallery Wellington

Enjoy captivating art from some of the world's leading artists.

### Parliament Buildings Tour

Explore the Parliament buildings, learn about the Parliamentary process in New Zealand.

### Mount Victoria Lookout

Walk through historic pine forest and enjoy unbeatable views of the harbour and city.

### Wellington Museum

Rated by Lonely Planet as one of their top 500 places on earth, New Zealand's national museum is a must-visit.



# Sponsors and Exhibitors

RANZCOG would like to extend our thanks and gratitude to all our Sponsors and Exhibitors: without them our ASM would not be possible.

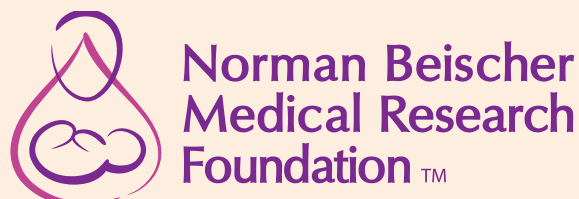
## Official Presenting Partner



## Major Partner



## Major Supporter



# RANZCOG Crèche and Parents Room

A crèche will be available for all delegates during the main days of the Scientific Program (Monday 14 October–Wednesday 16 October 2024).

You can indicate during the registration process should you wish to utilise this service and you will be contacted directly. Please visit the ASM Website for opening hours and pricing.

The cost of the crèche is subsidised by RANZCOG.

A Parents Room will be available for all delegates during the main days of the Scientific Program (Monday 14 October–Wednesday 16 October 2024).



# Te Reo Māori Glossary

To assist the many Australians who will be travelling to Aotearoa New Zealand for the RANZCOG ASM 2024, our team have put together a glossary of common words and phrases that are used in every day interactions in Aotearoa New Zealand.

Scan the QR code below to learn some Te Reo Māori before your journey!





# Continuing Professional Development

Delivering excellence in women's healthcare at all stages in life.

## Maximising Hours

### RANZCOG Fellows, Associate Members, Educational Affiliates and CPD Affiliates

Attendance at the RANZCOG Annual Scientific Meeting 2024 is approved for RANZCOG CPD hours under the Educational Activities domain.

Full Attendance (Meeting only)	18.5 hours
Monday 14 October 2024	6 hours
Tuesday 15 October 2024	7.5 hours
Wednesday 16 October 2024	5 hours

A certificate of attendance will be issued to all delegates after the event. RANZCOG Fellows, Associate Members, and Education Affiliates and CPD Affiliates will have their CPD hours uploaded on their behalf. All other delegates may self-claim CPD with their respective colleges.

## RANZCOG Associates (Procedural/Adv Procedural and GPs)

### Case Based Discussion Workshop

Unlock a world into medical insights in our thought provoking and collaborate half-day workshop designed for RANZCOG Associates (Procedural/ Adv Procedural) and GPs working in private practice, locum positions, or rural areas. This is a great opportunity for GPs to reflect on their current practice for improved patient outcomes.

Sunday 13 October, 08.30–12.30

## Maintaining your Annual Membership

### RANZCOG Associates (Procedural/Adv Procedural) and Certificants

Completion of a Professional Development Plan (PDP) is a mandatory requirement for all College CPD Homes. To maintain CPD requirements, Associates (Procedural and Advanced Procedural) and Certificants will be required to include goal(s)/ activity(s) for women's reproductive health, aligned to their scope of practice, and provide evidence of completion of activities in their CPD portal.



Scan for more information and to check your eligibility.

# Using the sFlt-1/PlGF ratio, 8 of 10 pregnant women/people at risk for preeclampsia, could be ruled out.<sup>4</sup>

## What does the sFlt-1/PlGF ratio tell me?

Reassuring women/people and avoiding unnecessary stress and hospitalisation.<sup>4</sup> The Roche Elecsys® sFlt-1/PlGF ratio was found to aid in the prediction and diagnosis of PE using selected cut-offs.<sup>1-3</sup>

<b>sFlt-1/PlGF ratio <math>\leq 38</math></b>	▶ <b>Short-term prediction Rule-out PE for 1 week</b>	▶ The patient will not develop PE for at least 1 week (99.3% NPV <sup>1</sup> ; 96.2% NPV <sup>5</sup> by SOMANZ criteria)
<b>sFlt-1/PlGF ratio <math>&gt;38 - &lt;85</math> (early-onset PE<sup>†</sup>) or <math>&gt;38 - &lt;110</math> (late-onset PE<sup>‡</sup>)</b>	▶ <b>Short-term prediction Rule-in PE within the next 4 weeks</b>	▶ Patient is at high risk to develop PE within the next 4 weeks (36.7% PPV <sup>1</sup> ; 75.0% PPV <sup>5</sup> by SOMANZ criteria)
<b>sFlt-1/PlGF ratio <math>\geq 85</math> (early-onset PE<sup>†</sup>) or <math>\geq 110</math> (late-onset PE<sup>‡</sup>)</b>	▶ <b>Diagnosis*</b>	▶ <b>Highly suggestive of PE</b> Or another form of placental insufficiency

<sup>†</sup>Early-onset PE: 20 – <34 weeks gestation; <sup>‡</sup>Late-onset PE:  $\geq 34$  weeks gestation; \*Use in addition to other accepted diagnostic tools and clinical information; NPV: negative predictive value; PPV: positive predictive value; SOMANZ: Society of Obstetric Medicine Australia and New Zealand

## When should I determine the sFlt-1/PlGF ratio? (pregnancy week $\geq 20+0$ )

### 1. Clinical suspicion of preeclampsia: Women/people with signs & symptoms

#### New definition of preeclampsia<sup>6</sup> (after 20 weeks of gestation)

Hypertension (new onset):

Systolic  $\geq 140$  mmHg

Diastolic  $\geq 90$  mmHg

#### AND

Proteinuria – urine protein/creatinine ratio  $\geq 30$ mg/mmol

#### OR

in **absence of proteinuria** one or more of the following

- Thrombocytopenia
- Renal insufficiency
- Impaired liver function
- Pulmonary oedema
- Cerebral or visual symptoms
- Fetal growth restriction

### 2. Unclear Diagnosis of preeclampsia: Women/people with non-specific signs & symptoms

#### High risk women/people<sup>6,7</sup>

1. Previous preeclampsia
2. Antiphospholipid Syndrome
3. Type 1 or 2 Diabetes
4. BMI  $>35$
5. Chronic hypertension
6. History of preeclampsia in a 1<sup>st</sup> degree relative
7. Chronic renal disease

#### Medium risk women/people<sup>6,7</sup>

1. Nulliparity
2. Multiple pregnancy
3. Age  $\geq 40$
4. Systolic BP  $>130$ mmHg before 20 weeks
5. Diastolic BP  $>80$ mmHg before 20 weeks
6. Chronic autoimmune disease
7. Interpregnancy interval  $> 10$  years
8. BMI  $> 25-34$

#### References

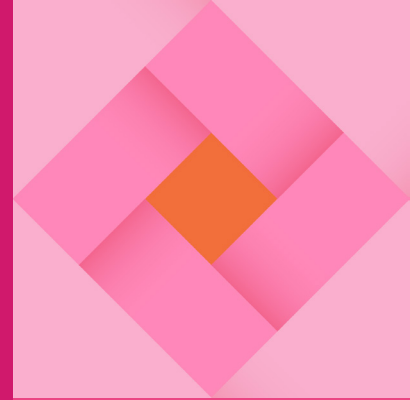
1. Zeisler, H. et al. (2016). *N Engl J Med* 374, 13–22.
2. Verloren, S. et al. (2010). *Am J Obstet Gynecol* 202(2), 161.e1–161.e11.
3. Verloren, S. et al. (2014). *Hypertension* 63(2), 346–52.
4. Stepan et al. (2015). *Ultrasound Obstet Gynecol* 45, 241–24.
5. Hughes RCE et al (2022). *Aust N Z J Obstet Gynaecol*. doi: 10.1111/ajo.13549
6. Lowe, SA. et al (2014). Society of Obstetric Medicine Australia and New Zealand (SOMANZ) Guideline for the Management of Hypertensive Disorders of Pregnancy, *Aust N Z J Obstet Gynaecol*. 2015 55(5).
7. Te Whatu Ora - Health New Zealand. 2022. *Diagnosis and Treatment of Hypertension and Pre-eclampsia in Pregnancy in Aotearoa New Zealand*. <https://www.tewhatuora.govt.nz/assets/Publications/Evidence-Statements-Hypertension-and-Pre-Eclampsia.pdf>. Accessed 15/05/2024.

COBAS and ELECSYS are trademarks of Roche.  
© 2024 Roche Diagnostics. All rights reserved.

Roche Diagnostics NZ Ltd, ANZ Raranga building, Level 1,  
Sylvia Park, Mount Wellington Highway, Mount Wellington,  
Auckland 1060, New Zealand

Ph: +64 9 276 4157

Email: [new\\_zealand.dia\\_communications@roche.com](mailto:new_zealand.dia_communications@roche.com)



# Registration Information

Please find detailed information for each registration category below. We recommend taking time to read through this to find out what type of registration works for you.

## In Person

### Full Registration Includes

- In person attendance at all meeting sessions (Monday to Wednesday)
- Trade exhibition admission
- Morning and afternoon tea (if applicable) and lunch for the duration of the meeting
- One ticket to the Welcome Reception held on Monday 14 October
- Digital Meeting App
- On Demand access to all content across the 3-day 3 stream Scientific Program post event for 3 months

Please note tickets to the social functions and Pre-Meeting Workshops are an additional cost.

## In Person Day

### Registration Includes

- In person attendance at all meeting sessions on day of attendance (Monday, Tuesday and/or Wednesday)
- Trade exhibition admission on day(s) of attendance
- Morning and afternoon tea (if applicable) and lunch on day(s) of attendance
- Digital Meeting App
- On Demand access to all content across the 3-day 3 stream Scientific Program post event for 3 months

Please note tickets to social functions and Pre-Meeting Workshops are an additional cost.

## On Demand

### Full Registration Includes

- Digital Meeting App
- On Demand access from 4 November to all content across the 3-day 3 stream Scientific Program post event for 3 months

## Cancellation Policy

Registration cancellations will not be accepted unless made in writing to the RANZCOG 2024 Annual Scientific Meeting Secretariat at [ranzocog@kandmevents.com.au](mailto:ranzocog@kandmevents.com.au)

Conditions	Charges
Up to 60 days prior to the event	100% refund less 10% administration fee
60 days prior to the event	50% refund less 10% administration fee
30 days prior to the event	No refund available

No refund will be paid following failure to attend without notice

Where there are extenuating circumstances, a full refund of the registration fee may be considered by and at the discretion of RANZCOG.

## Payment

All prices are in Australian dollars. Payment must accompany your registration. RANZCOG 2024 Annual Scientific Meeting registration cannot be confirmed until payment is received. RANZCOG will not be liable to compensate for exchange rate fluctuations.

### Credit Card

MasterCard and Visa are accepted. Payment by Cheque or EFT is not accepted.

### On Demand

Virtual attendance for the 2024 ASM will be On Demand, with attendees offered the opportunity to watch all presentations after the ASM on 4 November 2024 . Livestream will not be offered.



IN PERSON FULL REGISTRATION	EARLYBIRD (On or before 7 August 2024)	STANDARD (After 7 August 2024)
Full Registration Non-Member	\$2,901	\$2,901
Full Registration Fellow / Specialist	\$1,826	\$1,990
Full Registration Trainee	\$1,336	\$1,714
Full Registration RANZCOG Associates (Procedural/Adv Procedural)/ General Practitioner	\$1,336	\$1,714
Full Registration International Affiliate/ Junior Doctor/Midwives	\$913	\$1,142
Full Registration Low Resource Country	\$555	\$622
Full Registration Retired Fellow	\$913	\$1,142
Full Registration Medical Student	\$392	\$392
IN PERSON DAY REGISTRATION	STANDARD	
Day Registration Non-Member	\$1,299	
Day Registration Fellow / Specialist	\$997	
Day Registration Trainee	\$745	
Day Registration RANZCOG Associates (Procedural/Adv Procedural)/ General Practitioner	\$745	
Day Registration International Affiliate/ Junior Doctor/Midwives	\$498	
Day Registration Low Resource Country	\$297	
Day Registration Retired Fellow	\$498	
Day Registration Medical Student	\$179	
ON DEMAND REGISTRATION	STANDARD	
Virtual Registration Non-Member	\$2,522	
Virtual Registration Fellow / Specialist	\$1,730	
Virtual Registration Trainee	\$1,490	
Virtual Registration RANZCOG Associates (Procedural/ Adv Procedural)/ General Practitioner	\$1,490	
Virtual Registration International Affiliate/ Junior Doctor/Midwives	\$993	
Virtual Registration Low Resource Country	\$541	
Virtual Registration Retired Fellow	\$993	
Virtual Registration Medical Student	\$341	

Please note: Day Registration does not attract an Earlybird option.

Please note: Virtual attendance for the 2024 ASM will be on demand only, with attendees offered the opportunity to watch all presentations after the conclusion of the ASM. Livestream of Plenaries and Concurrent Sessions will not be offered.

Please note: All prices quoted are in AUD.

# Venue Information

Pre-Meeting Workshops

## Museum of New Zealand Te Papa Tongarewa

Saturday 12–Sunday 13 October

RANZCOG ASM 2024 Pre-Meeting Workshops will take place in Te Papa Tongarewa, opposite Tākina.

55 Cable Street, Te Aro, Wellington, Aotearoa New Zealand, 6011

Annual Scientific Meeting

## Tākina Wellington Convention and Exhibition Centre

Monday 14–Wednesday 16 October

Tākina Wellington Convention and Exhibition Centre is the venue for the RANZCOG ASM's Scientific Program and is the home of inspiring exhibitions and informative conferences in the heart of Wellington CBD's cultural precinct.

50 Cable Street, Te Aro, Wellington, Aotearoa New Zealand, 6011



# General Information

## How to book Accommodation

Booking your accommodation is a seamless process. Simply register for the event and you will be guided through to an accommodation page, select the hotel you would like to book, select your preferred room type, and enter your credit card details. The credit card will only be deducted 30 days prior to the conference in order to secure your reservation.

## Change of Booking and Cancellation

All reservations are subject to the individual hotel cancellation policies as stated in the hotel information on their website. RANZCOG does not take any responsibility for booking of accommodation or cancellation thereof.

## Credit Card Guarantee

Credit card details may be required as a guarantee for your accommodation booking: you will need to provide these when booking with your chosen hotel.

## Payment of Accommodation

The accommodation account and any incidental charges must be paid in full, directly to the hotel, on departure.

## On Demand Access for all Delegates

Missed a presentation? All recorded conference materials will appear on the conference platform for up to 90 days after the conference so you will have time to go back and watch anything you may have missed.

## Trade Exhibition

The trade exhibition will be an integral component of the ASM. This is a great opportunity for delegates to meet with trade representatives from the leading companies that provide products and services to the fields of Obstetrics and Gynaecology and find out about the latest developments and trends designed to assist practitioners.

To acknowledge the importance of the exhibition, the meeting program has been structured to ensure delegates have ample time to visit the trade area. Daily morning, afternoon teas (if applicable) and lunches will be held in this area.

## Dress Code

Please note that the dress standard for the meeting will be smart casual.

## Insurance

Delegates are strongly advised to secure appropriate travel and health insurance. Delegate registration fees do not provide any such insurance coverage. The Organising Committee, RANZCOG and the Meeting Secretariat accept no responsibility for any loss in this regard.

## Liability Disclaimer

In case of industrial disruption, the Organising Committee, RANZCOG and the Meeting Secretariat accept no responsibility for loss of monies incurred by delegates.

## Privacy Statement

Information provided on the registration form will be used to administer the Meeting including accommodation, catering, transport, sponsorship and exhibition. Data obtained will remain the property of RANZCOG and The Meeting Secretariat.

## Visa Information (International Only)

Some people can use a New Zealand Electronic Travel Authority (NZETA) to travel to New Zealand without applying for a visa first. This depends on your passport, how you are travelling and if you are visiting or only transiting. People travelling on a passport from some countries must apply for a Visitor Visa to visit New Zealand. If you are from a visa waiver country you may be able to visit New Zealand without a visa. Please note that visa processing times may vary. Delegates are encouraged to apply for the appropriate visa six to eight weeks before departure to New Zealand. For information about visa applications to enter New Zealand, please visit: <https://www.immigration.govt.nz/>

Importantly, it is the policy of the Meeting Secretariat not to supply an 'invitation letter' to unpaid or unregistered delegates as it is not required and does not assist in the visa-application process. Upon payment of registration fees, each delegate receives a confirmation letter of acceptance of registration and receipt of payment.

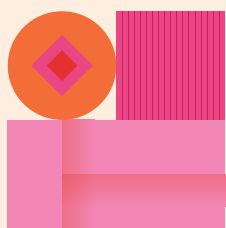
## Contact

For further information contact the RANZCOG ASM Professional Conference Organiser, K&M Events:

### K&M Events

57 Miranda Rd, Miranda NSW 2228  
+61 2 7501 5636  
[ranzcoog@kandmevents.com.au](mailto:ranzcoog@kandmevents.com.au)





**RANZCOG**

# **Annual Scientific Meeting 2024**

Wellington, Aotearoa New Zealand | 12–16 October  
Partnerships in Practice

[www.ranzcogasm.com.au](http://www.ranzcogasm.com.au)



**RANZCOG™**  
*Excellence in Women's Health*