



#RANZCOG24

RANZCOG Annual Scientific Meeting 2024

Wellington, Aotearoa New Zealand | 12–16 October
Partnerships in Practice

Program and Speaker Brochure

www.ranzcogasm.com.au

RANZCOG Annual Scientific Meeting 2024

Wellington
Aotearoa New Zealand
12–16 October
Partnerships in Practice

Organising Committee

Dr Per Kempe

Chair, Organising Committee

Dr Judy Ormandy

Chair, Scientific Program

Dr Charlotte Oyston

Co-Chair, Scientific Program

Dr Daisy Wildash

Social Program Convenor

Dr Bryony Simcock

Gynaecology Representative

Dr Fiona Bach

Urogynaecology Representative

Dr Simon McDowell

Fertility Representative

Dr Jaynaya Marlow

Maternal Fetal Medicine Representative

Dr Philip Suisted

He Hono Wāhine Representative

Dr Kasey Tawhara

He Hono Wāhine Representative

Dr Brendan Marshall

RANZCOG Associate (Procedural/Adv Procedural)
Representative

Dr Stephanie Luoni

Trainee Representative

Dr Gillian Gibson

RANZCOG President

RANZCOG Staff

Ms Vase Jovanoska

RANZCOG CEO

Mr Sudi Sekhar

Deputy CEO, Executive Director, Membership and
Engagement

Ms Catherine Cooper

Executive Director, Aotearoa, Global Health and
Foundation

Ms Sara MacArthur

Manager, Events

Ms Tiana Newman

Event Coordinator

Ms Kathleen McKinn

Event Coordinator

Ms Lucy Krelle

Event Coordinator

Ms Carly Moorfield

Volunteer Program Coordinator

Ms Laura Collins

Events and Professional Development Lead,
Aotearoa New Zealand

Ms Bailey Parata Thomas

Hauora Wāhine Māori Advisor

Join us in Wellington Aotearoa New Zealand

In 2024, the theme for the RANZCOG ASM revolves around the concept of “Partnerships in Practice.” This theme underscores the fundamental importance of partnerships across every facet of our roles as Obstetricians and Gynaecologists. Our connection with the women under our care stands as the most evident partnership we engage in as individual practitioners. Collaboratively, we make decisions regarding investigations and treatments in conjunction with our patients and their whānau (family).

Throughout our professional journey, partnerships play an ongoing role, extending to colleagues within our department, hospital, organisation, nation, and College. These relationships play a pivotal role in shaping our growth and development. Many of us find ourselves navigating both the realms of science and daily clinical practice within these partnerships.

A vital partnership involves our engagement with Māori communities in Aotearoa New Zealand and First Nations people in Australia: this demonstrates our commitment to personal growth and genuine collaborations in leadership, decision-making, and governance.

Our collaboration extends to the wider community as well, emphasising the importance of listening and empowering patients and whānau to shape their own care. It is essential to understand the desires and preferences of women and

their whānau regarding the nature and location of their healthcare. Equally significant is recognising their reservations and gaining insights from their perspectives. In achieving this, we can reach the pinnacle of genuine partnership.

Establishing genuine partnerships in leadership, decision-making, and governance holds the key to fostering equitable outcomes for women across both our nations.

RANZCOG's affiliations with other medical colleges in Australia, Aotearoa New Zealand, and internationally further underscore our commitment, and through these interconnected networks, we collectively work to enhance women's healthcare on a global scale.

Dr Per Kempe
RANZCOG ASM 2024 Organising Committee Chair



**We're looking forward to seeing everyone
in Wellington, Aotearoa New Zealand**





Keynote Speakers



Michael Robson

Besins Healthcare Keynote Speaker

Dr Michael Robson is a distinguished medical professional, who earned his MBBS at St Thomas's Hospital, London, England, in 1982. He has a rich background in Obstetrics and Gynaecology, serving as a Consultant at Wycombe General Hospital, England, from 1995 to 2004, where he also held the position of Clinical Director. Later, he became the Master at The National Maternity Hospital in Dublin, Ireland, from 2005 to 2011. Currently, Dr Robson is a Consultant Obstetrician and Gynaecologist at the National Maternity Hospital in Dublin, overseeing the delivery of 8000 babies annually. His expertise lies in labor management, organizational aspects of labour ward, teaching, audit, and research, focusing on dystocic labour. Dr Robson also serves as the National Clinical Director for the development of a National Electronic Patient Record for maternity, neonates, and gynaecology in Ireland, and has developed an Intrapartum Audit Software Programme aligned with the Ten Group Classification System.

See Michael and Marie in:

**C2: General Obstetrics,
Monday 14 October, 11.30–13.05**

**P3: Partnering to Learn by Outcomes,
Wednesday 16 October, 13.10–14.35**

**C19: Labour and Birth Outcomes in Australia and
New Zealand, Wednesday 16 October, 11.00–12.10**

**C22: Labour and Birth Outcomes in Australia and
New Zealand, Wednesday 16 October, 13.10–14.35**

Marie Vikström Bolin

Norman Beischer Medical Research Foundation Keynote Speaker

Dr Marie Vikström Bolin, MD, PhD, is a leading figure in Obstetrics and Gynaecology, currently serving as the Regional Clinical Director of Maternity Care in Västernorrland, Sweden. She plays a crucial role as a board member of the Swedish Society of Obstetrics and Gynaecology, overseeing clinical quality registries. Dr Vikström Bolin is deeply committed to advancing healthcare, contributing to the Swedish Pregnancy Registry and the Swedish National Quality Registry of Gynaecological Surgery. Her dedication extends to education and training, engaging with midwifery and medical students, co-authoring textbooks, and developing pelvic floor training programs. Additionally, she provides expert advice to the Swedish Agency for Health Technology Assessment and Assessment of Social Services, and contributes to projects aimed at reducing birth trauma in Sweden. Dr Vikström Bolin's expertise and commitment has greatly impacted maternal and reproductive healthcare in Sweden.

Memorial Orators

Karel Williams

Alison Bush Memorial Orator

Karel Williams is a First Nations midwife based on Ngunawal Country (Canberra, ACT). Her family connections are to the palawa and Western Arrernte Nations. Karel is a passionate advocate for Birthing on Country models of care, culturally safe practices, and increasing the First Nations midwifery workforce. Currently, Karel is a Director of the Rhodanthe Lipsett Indigenous Midwifery Trust and advises the ACT Department of Health on Midwifery in Focus and Birthing on Country initiatives. Karel's dedication earned her a Distinguished Alumni Award for Excellence in Health from University of Canberra in 2019, and she is now pursuing a PhD on restorative practices in First Nations maternity care.

See Karel's Oration in:

P1: Partnerships with First Nations People in Australia, and Māori in Aotearoa New Zealand, Monday 14 October, 09.45–11.10



Karaponi Okesene-Gafa

Arthur Wilson Memorial Orator

Moananu Dr Karaponi Okesene-Gafa is a distinguished Senior Lecturer in the Department of Obstetrics and Gynaecology at the University of Auckland. Moananu Dr Okesene-Gafa has made significant contributions to the field of women's health, both in academia and clinical practice.

See Karaponi's Oration in:

P2: Partnerships with Community, Tuesday 15 October, 08.25–11.05



Kati Taghavi

Ella Macknight Memorial Orator

Dr Kati Taghavi holds an MD-PhD in epidemiology, focusing on cervical cancer prevention among women living with HIV (WLWH) in sub-Saharan Africa. Her research addresses gaps in screening programs and explores novel screening methods, notably the Gynocular™. She continues her work with funding for long-term follow-up studies in Zambia and investigates treatment efficacy among WLWH in Zimbabwe. Additionally, Dr Taghavi has consulted on cervical screening guidelines for the WHO and is involved in the European Commission Initiative on Cervical Cancer (EC-CvC).

See Kati's Oration in:

P2: Partnerships with Community, Tuesday 15 October, 08.25–11.05



1 in 4

pregnant women
experience a threatened miscarriage^{1,2}

Find out how you can help

Scan the QR code to access latest updates and resources.

besins-healthcare.com.au/support-network

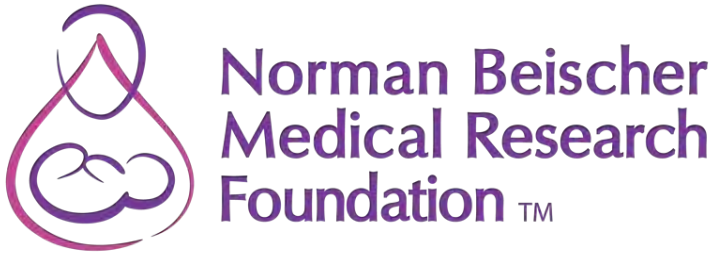


Initial presentation of threatened miscarriage often occurs in general practice.² Utrogestan should be initiated at the first sign of unexplained vaginal bleeding during the first trimester of pregnancy and continued to at least the 16th week of gestation.³

PBS Information: Authority required (STREAMLINED) for Assisted Reproductive Technology and for the prevention of Preterm Birth. Refer to PBS Schedule for full authority. This product is not listed on the PBS for treatment of Threatened Miscarriage.

Before prescribing please review the Product Information available at besins-healthcare.com.au/PI or telephone 1800 BESINS (237 467).

References: 1. Victoria State Government, Department of Health, Better Health Channel. Pregnancy – bleeding problems. Available at <https://www.betterhealth.vic.gov.au/health/healthyliving/pregnancy-bleeding-problems>. Accessed January 2023. 2. Breeze C. Aus Fam Phys 2016;45(5):283–86. 3. Utrogestan (micronised progesterone) Product Information, last accessed January 2024. Utrogestan 200 (vaginal use – micronised progesterone) Indication: luteal phase support during assisted reproduction; treatment of threatened miscarriage in women with a history of ≥ 3 previous miscarriages and women with < 3 miscarriages who have a reduced chance of future pregnancy. Benefit of treatment was greatest in women with ≥ 3 previous miscarriages; prevention of preterm birth in women with singleton pregnancy who have a short cervix (midtrimester sonographic cervix ≤ 25 mm) and/or a history of spontaneous preterm birth; Dosage and Use: during luteal phase support in controlled ovarian cycles 600 mg/day as 3 divided doses from day of embryo transfer until 7th week of pregnancy and not later than the 12th week. For treatment of threatened miscarriage, usual dose is 400 mg twice a day (morning and night). Treatment should be initiated at the first sign of vaginal bleeding during the first trimester of pregnancy and should continue to at least the 16th week of gestation. For prevention of preterm birth, usual dose is 200 mg/day, recommended at bedtime. Treatment can be initiated during the 2nd trimester (16–24 gestational weeks) and is to be continued to the end of the 36th week of gestation or until delivery. Each capsule of Utrogestan must be inserted deep into the vagina. The average dosage is 200 to 800 mg of progesterone per day administered vaginally. This may be increased, depending on the patient's response. Contraindications: known allergy/hypersensitivity to progesterone/excipients; severe hepatic dysfunction; undiagnosed vaginal bleeding; known missed abortion/ectopic pregnancy; mammary/genital tract carcinoma; thromboembolic disorders; thrombophlebitis; cerebral haemorrhage; porphyria. Special Warnings and Precautions: should only be used by vaginal route for the recommended timeframes for each indicated use (pregnancy Cat A); cytolytic liver damage/gravidic cholestasis exceptionally reported during 2nd and 3rd trimesters of pregnancy; not a contraceptive; uterine bleeding cause must be established before use; discontinue use upon diagnosis of missed abortion; use caution in conditions affected by fluid retention and history of depression, diabetes, hepatic dysfunction, migraine, venous thrombosis, photosensitivity and hypersensitivity to soya lecithin; not to be used during lactation; may affect laboratory test results; the evidence that Utrogestan reduces the risk of preterm birth in women with a short cervix with twin/multiple pregnancy and/or a history of spontaneous preterm birth is limited. Interactions: caution with P450 enzyme inducers and inhibitors; bioavailability may be reduced by smoking and increased by alcohol abuse. Very Common and Common Adverse Effects: none noted with vaginal administration in clinical trials. Utrogestan[®] is a registered trademark of Besins Healthcare. Besins Healthcare Australia Pty Ltd. ABN 68 164 882 062. Suite 5.02, 12 Help St, Chatswood NSW 2067. Office phone (02) 9904 7473. For medical information call 1800 BESINS (237 467). www.besins-healthcare.com.au UTR-2064 Prepared May 2024.



Advancing Women's Reproductive Health and Infant Well-being

The Norman Beischer Medical Research Foundation is dedicated to enhancing the reproductive health of women and the well-being of their babies and infants. We actively support research in obstetrics and the prevention, control, and treatment of gynaecological diseases. By funding clinical and scientific research from leading and emerging researchers, we aim to educate and inform medical practice both in Australia and globally.

The Norman Beischer Research Fellowships

Our prestigious Research Fellowships offer an outstanding clinician researcher the chance to receive a \$660,000 award over three years. These fellowships are designed for early-to-mid-career researchers who have completed their PhD within the last seven years. Applicants must be working in areas of interest to the Foundation and affiliated with an institution in Victoria. The clinicians targeted by the Fellowship program will be Obstetricians, Neonatologists and Gynaecologists or clinicians supporting healthy obstetric outcomes or dealing with issues associated with gynaecology or neonatology.

Innovation Grants

Our Innovation Grants provide seed funding for highly innovative research projects with significant clinical impact potential. These grants can pave the way for major grant applications to institutions like the NHMRC and the Medical Futures Fund. Open to researchers at any career stage within Victoria, these grants are typically awarded for one year, with possible extensions.

Grant Amount

We will award approximately nine Innovation Grants per year, each up to \$73,000.

Contact Information

For more information on Fellowships or Innovation Grants, please visit nbmrf.org.au or contact:

Andrew Brookes, Executive Director
Email: admin@nbmrf.org.au

Pre-Meeting Workshops and Satellite Meetings



Cultural Safety Hīkoi - A Journey of Pōneke

09.00–15.30

Saturday 12 October

Suitable for: RANZCOG Fellows, RANZCOG Associates (Procedural/Adv Procedural), CPD Affiliates, FRANZCOG Trainees, Nurses and Midwives
Registration: \$350

Includes: Morning Tea, Lunch

CPD: 2 hours Educational Activities, 2 hours Performance Review

Experience a unique journey through Pōneke (Wellington) with renowned RANZCOG Kaumātua, Luke Crawford, and He Hono Wāhine. This immersive workshop is designed to enrich your understanding of cultural safety, connection to whenua (land), local iwi pūrākau (myth, story), and Māori history.

For our Australian delegates – this hīkoi is all about levelling up your cultural safety and becoming even better at patient-centred care. You'll be diving into the unique world of Pōneke Māori culture and history, but the insights you'll hear apply to all Indigenous peoples.

Gynaecological Skills Workshop

08.30–12.30

Saturday 12 October

Suitable for: RANZCOG Associates (Procedural/Adv Procedural), GPs, RANZCOG CPD Affiliates

Registration: \$450

Includes: Morning Tea

CPD: TBC

Attention GPs and RANZCOG Associates (Procedural/Adv Procedural)! Bolster your scope of practice with our specially curated Gynaecological Skills Workshop Program. The program is designed to provide targeted professional development opportunities, imparting you with practical skills to enhance your scope of practice.

OASI Workshop

13.00–17.00

Saturday 12 October

Suitable for: RANZCOG Associates (Procedural/Adv Procedural), GPs, RANZCOG CPD Affiliates, RANZCOG Trainees, RANZCOG Fellows

Registration: \$550

Includes: Afternoon Tea

CPD: 3 hours Educational Activities, 1 hour Performance Review

Perineal repair, a critical aspect of obstetric and gynaecological care and throughout this workshop, participants will engage in hands-on training, interactive discussions, and comprehensive demonstrations to develop a deep understanding of perineal anatomy, recognise different types of perineal trauma, and master the techniques for effective repair.

FSEP Workshop

09.00–16.30

Sunday 13 October

Suitable for: RANZCOG Fellows, RANZCOG Associates (Procedural/Adv Procedural), CPD Affiliates, RANZCOG Trainees, Junior Doctors, Nurses and Midwives

Registration: \$725

Includes: Morning Tea, Lunch, Afternoon Tea

CPD: 3 hours Educational Activities, 2 hours Outcome Measurement, 1.5 hours Performance Review

Unlock a deeper understanding of cardiotocography and enhance your skills with our Full FSEP Workshop Program. Structured to cumulatively build knowledge, this workshop is designed to empower clinicians engaged in antenatal and intrapartum care. Don't miss this opportunity to advance your skills and earn essential CPD hours in Outcome Measurement and Performance Review.

Workshop numbers are limited, so early registration is encouraged. Each workshop is subject to sufficient attendance and may be cancelled if minimum numbers are not reached: in this event, fees paid will be fully refunded. Workshops are subject to change and are correct at time of printing.

Case Based Discussion for RANZCOG Associate (Procedural/Adv Procedural) and GPs

08.30–12.30
Sunday 13 October

Suitable for: RANZCOG Associates (Procedural/Adv Procedural), GPs, RANZCOG CPD Affiliates
Registration: \$350
Includes: Morning Tea
CPD: 30 minutes Educational Activities, 2 hours Outcome Measurement, 1 hour Performance Review

Unlock a world of insights in our dynamic half-day workshop designed for RANZCOG Associates (Procedural/Adv Procedural) and GPs working in private practice, locum positions, or rural areas. Tailored for busy professionals, this 4-hour session is a catalyst for knowledge sharing, critical thinking, and problem-solving in the field of Obstetrics and Gynaecology. Dive into real-life cases, aimed to enhance your problem-solving skills. You will engage in in-depth discussion of patient history, clinical findings, and diagnostic tests.

Hot and Cold Debrief Workshop

08.30–12.30
Sunday 13 October

Suitable for: RANZCOG Fellows, RANZCOG Trainees, RANZCOG CPD Affiliates, Nurses and Midwives
Registration: \$350
Includes: Morning Tea
CPD: TBC

In this interactive workshop, we'll delve into the effective use of "hot" and "cold" debriefs to support your team in critical moments.

A "hot debrief" is a structured, immediate conversation following a critical event, focusing on psychological support. It allows staff to express emotions, receive validation, and offer mutual support. Events such as major maternal or neonatal resuscitation, neonatal or maternal death, peripartum hysterectomy, or traumatic births may prompt a hot debrief. In contrast, a "cold debrief" is a more formal, clinical narrative of a critical event. It focuses on clarifying events, education, and quality improvement. While the primary focus is on hot debriefs, we will touch briefly on cold debriefs, comparing and contrasting the two to ensure clarity on when and how to conduct each type effectively with your team.



PVOGS Laparoscopic Skills Workshop

12.30–17.30
Sunday 13 October

Suitable for: Junior Doctors, Medical Students
Registration: \$150
Includes: Afternoon Tea
CPD: TBC

Get ready for an immersive and interactive experience at the upcoming PVOGS ANZ workshop! Our face-to-face session promises to blend engaging presentations with hands-on learning like never before. Kickstarting the session is a dynamic 45-minute presentation led by one of our esteemed advanced laparoscopic surgeons. Dive into the world of laparoscopic surgery with a comprehensive introduction that sets the stage for what's to come. Our practical component is divided into two exciting segments: 'Basic Laparoscopic Skills' and 'More Advanced Laparoscopic Skills.'

Emotional Intelligence Workshop

13.00–17.30
Sunday 13 October

Facilitator: Sharee Johnson
Suitable for: RANZCOG Associates (Procedural/Adv Procedural), GPs, RANZCOG CPD Affiliates, RANZCOG Trainees, Nurses and Midwives
Registration: \$450
Includes: Afternoon Tea
CPD: 2 hours Educational Activities, 1.5 hours Performance Review

Discover the transformative power of emotional intelligence and compassion under the guidance of the extraordinary Sharee Johnson. In this illuminating workshop, delve into the intricacies of stress responses, real-time self-care, the profound connection between emotions and the physical body, and the origin of our emotional landscapes.

UGSA Presents Build Your Own Pelvis: Hands-On Clay Pelvic Anatomy Workshop

08.30–12.30
Sunday 13 October

Suitable for: RANZCOG Fellows, RANZCOG Associates (Procedural/Adv Procedural), CPD Affiliates, Trainees, General Practitioners, Allied Health Professionals, Nurses and Midwives
Registration: \$450
Includes: Morning Tea
CPD: TBC

Presented by the Urogynaecology Society of Australia, this interactive session will see participants teaming up to craft a detailed pelvis using clay and assorted materials, starting with the foundational bony structure. Delve deeper as you construct ligamentous connections, muscle groups, pelvic organs, and nerves, gradually forming a comprehensive depiction of the pelvis.



Program Overview

Monday 14 October 2024

Time	Plenary	Concurrent 2	Concurrent 3
09.00–09.30	ASM Welcome Peter Jackson, Luke Crawford, Pelle Kempe and Gillian Gibson		
09.30–11.00	Plenary One: Partnerships with First Nations People in Australia, and Māori in Aotearoa New Zealand Chairs: Kasey Tawhara and Phil Suisted		
09.30–09.40	Session Welcome and Introductions		
09.40–10.00	Partnerships with Tangata Whenua/ People of the Land David Tipene-Leach		
10.00–10.20	Honouring First Nations Health Practices Melanie Briggs		
10.20–10.40	Alison Bush Memorial Orator (Introduced by Marilyn Clarke) Karel Williams		
10.40–11.00	Panel Discussion: Partnerships to Achieve Health Equity for First Nations Peoples in Australia and Aotearoa New Zealand (How to Close the Gap and Te Tiriti) Melanie Briggs, David Tipene-Leach and Karel Williams		
11.00–11.30	Morning Tea and Exhibition	Morning Tea and Exhibition	Morning Tea and Exhibition
11.30–13.00	Concurrent One: A Broader View: RANZCOG's Relationships Across the Globe Chair: Vijay Roach	Concurrent Two: General Obstetrics Chair: Pelle Kempe	Concurrent Three: Gynaecological Oncology Chair: Bryony Simcock
11.30–11.40	Session Welcome and Introductions	Session Welcome and Introductions	Session Welcome and Introductions
11.40–12.00	Asia And Oceania Federation Of Obstetrics And Gynaecology	Nurturing Better Partnerships with Midwives Jennifer Green	What can a Robot Offer in Gynaecological Oncology? Susannah Mourton
	Indonesian Society Of Obstetricians And Gynecologists		
12.00–12.20	Federation Of Obstetric And Gynaecological Societies Of India	Auditing Induction of Labour Michael Robson (Supported by Besins Healthcare)	Epithelial Ovarian Cancer in 2024 Toni Jones
	Obstetrical And Gynaecological Society Of Malaysia		
12.20–12.40	European Board and College of Obstetrics and Gynaecology	Outpatient Induction of Labour Marie Vikstrom-Bolin (Supported by Norman Beischer Medical Research Foundation)	Rural Relationships in Cancer Care Ken Jaaback
	The American College of Obstetricians and Gynecologists		
12.40–13.00	The Society of Obstetricians and Gynaecologists of Canada Royal College of Obstetricians and Gynaecologists	Labour and Birth Interventions and Outcomes in relation to BMI Stephanie Luoni	HPV/LS: Does it Matter? Lois Eva
13.00–14.00	Lunch and Exhibition	Lunch and Exhibition	Lunch and Learn



Program Overview

Monday 14 October 2024

Time	Plenary	Concurrent 2	Concurrent 3
14.00–15.30	Concurrent Four: Pacific Medicine: Working with our Pacific Family Chair: Judy Ormandy	Concurrent Five: Maternal Fetal Medicine (Supported by the Norman Beischer Medical Research Foundation) Chair: Jaynaya Marlow	Concurrent Six: Urogynaecology Chair: Fiona Bach
14.00–14.10	Session Welcome and Introductions	Session Welcome and Introductions	Session Welcome and Introductions
14.10–14.30	Addressing Health Disparities in Pacific Communities Karaponi Okesene-Gafa	Palliative Care Models for High-Risk Pregnancies Amanda Evans	Urology for the Gynaecologist Hazel Ecclestone
14.30–14.50	Translational Research Projects and Studies in Women's Health Philip Cellich	Advances in Fetal Monitoring Fiona Brownfoot (Supported by the Norman Beischer Medical Research Foundation)	Anatomical Considerations for the Development of Uterine and Vaginal Prolapse Bernard Haylen
14.50–15.10	Access to Quality Care in Fiji Ahalya Sathiyaselvan	Advances in Fetal Imaging: AI Technology Trial Jade Lodge	Continence Procedures: What are our Options and how do we Choose them? Xiamin Liang
15.10–15.30	Maternal Death in Tonga Rajat Gyaneshwar & Maake Tuupou	Ethnic Disparities in Congenital Cardiac Disease Simone Watkins	Sexual Health and Urogynaecological Disorders: Addressing Patient Concerns Jill Wood
15.30–16.00	Afternoon Tea and Exhibition	Afternoon Tea and Exhibition	Afternoon Tea and Exhibition
16.00–17.15	Concurrent Seven: Antenatal Care Chair: Jaynaya Marlow	Concurrent Eight: The Trainee Perspective Chair: Stephanie Luoni and Brendan Marshall	Concurrent Nine: Free Communications
16.10–16.30	THOR (The Hands of Rescue): Baby Bundles Barry Kirby	Transitioning Through Training Graham Slaney	Free Communication Presentation One
16.30–16.50	SGA Guidelines: Comparison of International Guidelines Ngaire Anderson	What Do You Really Need to Know to Be an SMO Rebecca Crabbe	Free Communication Presentation Two
16.50–17.10	Whānau and Providers Working Together to Improve Preterm Birth Outcomes: The Carosika Collaborative Katie Groom and Tina Allen-Mokaraka The Carosika Collaborative	Professional Supervision for Training and Beyond Shaystah Dean	Free Communication Presentation Three
17.10–17.15	Karakia	Karakia	Free Communication Presentation Four
17.15–18.30	Welcome Reception	Welcome Reception	Free Communication Presentation Five
			Free Communication Presentation Six
			Karakia
			Welcome Reception

RANZCOG 2024 Annual General Meeting

16.30–17.30

The RANZCOG 2024 Annual General Meeting will take place at the ASM. RANZCOG Fellows are invited to attend this important meeting.

By your side more than ever before

Supporting you with a range of products and services from medical indemnity, life and health insurance, to practice solutions, lending and legal advice.



Dr James Kemper
Obstetrics and
gynaecology registrar



Find out more
avant.org.au | 1800 128 268

IMPORTANT: Professional indemnity insurance products are issued by Avant Insurance Limited, ABN 82 003 707 471, AFSL 238 765. Please read the relevant Product Disclosure Statement or policy wording, available at avant.org.au before deciding whether to acquire, or continue to hold the product. Life insurance advisory services, health insurance, practice management software, financial services and legal advisory services are provided by different companies within the Avant Mutual Group of companies. For more information, visit avant.org.au. MJN1477 04/24 (DT-3779)



Program Overview

Tuesday 15 October 2024

Time	Plenary	Concurrent 2	Concurrent 3
07.45–08.25	Breakfast Session One	Breakfast Session Two	Breakfast Session Three
08.30–11.00	Plenary Two: Partnerships with Community Chair: Phil Suisted		
08.30–08.40	Mihi Whakatau Phil Suisted and Wendy Dallas-Katoa		
08.40–08.50	Session Welcome and Introductions		
08.50–09.10	Community Engagement: Empowering Families for Preventative Care Glenn Colquhoun		
09.10–09.30	Collaboration for Accessible and Inclusive Healthcare George Parker		
09.30–09.50	Arthur Wilson Memorial Oration Karaponi Okesene-Gafa		
09.50–10.10	Ella Macknight Memorial Oration Kati Taghavi		
10.10–10.30	Immediate Past President's Oration Benjamin Bopp		
10.30–11.00	Morning Tea and Exhibition	Morning Tea and Exhibition	Morning Tea and Exhibition





Program Overview

Tuesday 15 October 2024

Time	Plenary	Concurrent 2	Concurrent 3
11.00–12.30	Concurrent Ten: #empowered: Informing and Empowering Through Social Media Chair: Charlotte Oyston	Concurrent Eleven: Abortion Chair: Anna Hudspith and Rachel Rapkin	Concurrent Twelve: Pelvic Pain Chair: Fiona Bach
11.00–11.10	Session Welcome and Introductions	Session Welcome and Introductions	Session Welcome and Introductions
11.10–11.30	Social Media to Empower and Inform - A New Zealand Perspective Morgan Edwards	Second Trimester Abortion Provision: Who, What, Where, When, How, Why? Paddy Moore	Trauma Informed Care Simon Goss
11.30–11.50	Highs, Lows, Wins and Challenges - My Experience in Digital and Online Communication Danielle Jones	Abortion Ethics: A Values Clarification Session Angela Ballantyne	Pelvic Mesh Bernadette Brown
11.50–12.10	Empowerment Beyond Borders-Delivering Women's Health Education across India and it's Subcontinents Sumaiya Sayed	Māori Perspectives on Abortion Melanie Gibson, Tania Slater and et al	Pelvic Pain: Interdisciplinary Collaborative Care Karen Joseph
12.10–12.30	Fighting Misinformation Siouxie Wiles	Disability and Abortion Brigit Mirfin-Veitch	Physical Therapy and Pelvic Pain Management: A Team Approach Eleanor Pidgeon
12.30–13.30	Lunch and Exhibition	Lunch and Exhibition	Lunch and Learn
13.30–14.55	Concurrent Thirteen: Support Networks in Medicine: Whānau and Caring for the Carer Chair: Daisy Wildash	Concurrent Fourteen: Obesity through the Lifespan Chair: Bryony Simcock and Stephanie Luoni	Concurrent Fifteen: Training and Education Chair: Philip Suisted
13.30–13.40	Session Welcome and Introductions	Session Welcome and Introductions	Session Welcome and Introductions
13.40–13.55	Balancing Family Life and Demands of Medical Practice Sharee Johnson	Effects of Ultra-Processed Food Inutero on Mental Health of Offspring Julia Rucklidge	Evidence Based Training Andrew Percy
13.55–14.10		Diamond Clinic Glyn Teale	Prevocational Exposure to O&G Judy Ormandy





Program Overview

Tuesday 15 October 2024

Time	Plenary	Concurrent 2	Concurrent 3
14.10–14.25	Panel Session: The Impact of Supportive Families on Healthcare Professionals Partners of RANZCOG Fellows and Trainees, Chaired by Sharee Johnson	Obesity and Endometrial Cancer Sathana Ponnampalam	The Benefits of Longitudinal Training Sarah Rennie
14.25–14.40		Solutions for Obesity: Pharmacology Agents for Weight Loss Rosemary Hall	The Benefits of Expanded Training from a Consumer Perspective Tessa Kowaliv
14.40–14.55		Advocacy Health Coalition Aotearoa: How can we change the Status Quo? Lisa Te Moenga	Ongoing Fellow Training: Operating with a Peer - A Conversation
14.55–15.30	Afternoon Tea and Exhibition	Afternoon Tea and Exhibition	Afternoon Tea and Exhibition
15.20–17.00	Concurrent Sixteen: LGBTQIA+ Health: Gender and Diversity Chair: Jen Randle and Akira Lefevre	Concurrent Seventeen: Colposcopy: Outside the Box Chair: Daisy Wildash	Concurrent Eighteen: Free Communications
15.30–15.40	Session Welcome and Introductions	Session Welcome and Introductions	Session Welcome and Introductions
15.40–16.00	Learning from Lived Experience: LGBTQIA+ Patients and O&G Services	HPV Primary Screening in Aotearoa New Zealand and Australia Nadine Riwai and Jared Watts	Free Communication Presentation Seven
16.00–16.20	Service Level Approaches to Improving LGBTQIA+ Experiences	Collaborating with Community Judy Ormandy	Free Communication Presentation Eight
			Free Communication Presentation Nine
16.20–16.40	Cultural Safety and your LGBTQIA+ Colleagues	Colposcopy in a Rural Setting Lisa Whop	Free Communication Presentation Ten
			Free Communication Presentation Eleven
16.40–16.50	Karakia	Karakia	Free Communication Presentation Twelve
			Karakia





Program Overview

Wednesday 16 October 2024

Time	Plenary	Concurrent 2	Concurrent 3
07.45–08.25	Breakfast Session One	Breakfast Session Two	Breakfast Session Three
08.30–10.30	Plenary Three: Partnering to Learn by Outcomes: Chair: Pelle Kempe		
08.30–08.40	Mihi Whakataua		
08.40–08.50	Session Welcome and Introductions		
08.50–09.10	Australasian Pelvic Floor Procedure Registry Susannah Ahern		
09.10–09.30	Quality Improvement through Continuous Outcome Analysis, the Swedish Gynaecology and Pregnancy Quality Registries Marie Vikstrom Bolin (Supported by Norman Beischer Medical Research Foundation)		
09.30–09.50	The Ten Group Classification System: What is it and how Might it Make a Difference? Michael Robson (Supported by Besins Healthcare)		
09.50–10.30	Panel Discussion Michael Robson, Marie Vikstrom Bolin and Susannah Ahern		
10.30–11.00	Morning Tea and Exhibition	Morning Tea and Exhibition	Morning Tea and Exhibition
11.00–12.10	Concurrent Nineteen: Labour and Birth Outcomes in Australia and New Zealand Chair: Pelle Kempe and Michael Robson	Concurrent Twenty: Sexual and Reproductive Health Chair: Judy Ormandy	Concurrent Twenty One: International Research and Trials: Using Networks at Different Levels Chair: Charlotte Oyston
11.00–11.10	Session Welcome and Introductions: Interpreting the Ten Group Classification System Michael Robson	Session Welcome and Introductions	Session Welcome and Introductions
11.10–11.30	Alice Springs Hospital Caboolture Hospital Whanganui Hospital Middlemore Hospital Maitland Hospital Whakatane and Tauranga Hospitals Timaru Hospital Westmead Hospital Auckland City Hospital Midcentral Hospital	Syphilis Outbreak Julia Scott	Te Puna Wairua Bev Lawton
11.30–11.50		Changes to Gray's Anatomy: Chapter 75, Female Reproductive System Bernard Haylen	Transforming Clinical Research with Adaptive Platform Trials: Improve Preterm Birth Outcomes for Preterm Infants: Clare Whitehead
11.50–12.10		I'm not Paid to give you a TED Talk on how my Trans Body Works Sara Filoche	What's New in Systematic Reviews? Cynthia Farquhar



Program Overview

Wednesday 16 October 2024

Time	Plenary	Concurrent 2	Concurrent 3
12.10–13.00	Lunch and Exhibition	Lunch and Exhibition	Lunch and Learn
13.00–14.30	Concurrent Twenty Two: Labour and Birth Outcomes in Australia and New Zealand Chair: Pelle Kempe and Michael Robson	Concurrent Twenty Three: Regional and Rural Health Chair: Brendan Marshall	Concurrent Twenty Four: Reproductive Endocrinology and Infertility Chair: Simon McDowell
13.00–13.10	Session Welcome and Introductions: Interpreting the Ten Group Classification System Marie Bolin	Session Welcome and Introductions	Session Welcome and Introductions
13.10–13.35	Joondalup Health Campus Royal Women's Hospital Liverpool Hospital Mater Hospital Nelson/Mariborough - Wairau Hospital Otautahi Hospital Campbelltown and Camden Hospitals Royal North Shore Hospital Hornsby Ku-Ring-Gai Hospital Sunshine Hospital (Western Health) Tweed Byron Health Service Royal Hobart Hospital Tairāwhiti Hospital Lyell McEwin Hospital Gisborne Hospital Northern Region Nelson Hospital Royal Brisbane and Women's Hospital	Flying O&G Adam Bush	Primary Level Fertility Care: When to Seek Help, Basic Testing, Optimising Chances at Home Sarah Wakeman
13.35–14.00		British Columbia RSON and ROAM	Secondary Level Fertility Care: Reproductive Surgery, Ovulation Induction, when to Refer Leigh Searle
14.00–14.25		Telehealth in Pregnancy Care Kirsten Palmer	Tertiary Level Fertility Care: IVF, Insemination, PGTA, PGTM, Donor Programs Andrew Murray
14.30–14.50	Closing of the ASM		
14.30–14.40	Presentation of Awards Gillian Gibson		
14.40–14.45	Launch of the RANZCOG ASM 2025 Louise Hull		
14.45–14.50	Final Comments including Karakia Pelle Kempe		





“If someone had sat down with me and explained how alcohol could harm my baby, I would have given up sooner.”

Mother of a child with Fetal Alcohol Spectrum Disorder (FASD)



Advise women who are pregnant or trying to conceive that they should not drink alcohol, and provide support to help them achieve this.

Find out more about the free and accredited training available online. This provides up-to-date information and support to help you optimise pre-conception and pregnancy care.

every moment matters

fare.

This project is funded and endorsed by the Australian Government.



Learn more at:

everymomentmatters.org.au



Wellywood ASM Gala Dinner

19.00–late
Tuesday 15 October

Venue: Museum of New Zealand Te Papa
Tongarewa

Cost: \$195

Includes: 3 course dinner, signature cocktails
and beverages

Dress code: Guests are requested to wear
attire befitting the occasion's elegance and
sophistication.

Lights, camera, action! Get ready for a night of Hollywood glamour right here in Wellington at Te Papa Museum's exclusive gala dinner: Wellywood! Immerse yourself in the allure of Wellywood as you sip on gin cocktails crafted by local distilleries, perfectly complementing the elegance of the evening. Indulge your senses as you dine amidst the awe-inspiring surroundings of Te Papa Museum, surrounded by treasures of art, culture, and history. Get ready to hit the dance floor and groove to the sensational sounds of an amazing band, complete with a horn section that will have you dancing until the stars fade away.

Welcome Reception

17.30–18.30
Monday 14 October

Venue: Takina Wellington Convention Centre, Exhibition Hall
Cost: Free for Delegates. Guest tickets available for purchase.
Includes: Drinks and canapés.
Dress code: Smart casual.

After a day filled with enriching scientific sessions, unwind with colleagues and make new connections over delectable canapés and refreshing drinks.



Out and About in Wellington



10% OFF DAY TOUR

Zealandia Eco-Sanctuary Tour

See some of New Zealand's rarest native animals thriving in the wild and discover 80 million years of natural history.

For 10% discount on Zealandia By Day tour, use code: **TAKINA10**

Valid for online bookings until 31 October 2024

www.visitzealandia.com



10% OFF DAY TOUR

Te Papa Tour

The perfect way to get an overview of Te Papa's highlights, Māori treasures, and New Zealand history.

For 10% discount on Introducing Te Papa Tour, use code: **TEPAPATOURS24**

Valid for online bookings until 31 December 2024

www.tepapa.govt.nz



20% OFF WORKSHOP TOUR

WĒTĀ Workshop

Visit the workshop that crafts physical effects for some of the world's most renowned films and TV shows.

For 20% discount on adult tours, use code: **EXPLOREWLG24**

Valid for online bookings until 31 December 2024

www.wetaworkshop.com

10% OFF FACTORY TOUR

Wellington Chocolate Factory

Learn all about the chocolate-making process, right from bean to bar, and make your own chocolate bars.

For 10% off any tour, use code: **WLGNZ2024**

Valid for online bookings until 23 December 2024

www.wcf.co.nz

Scan for more information.



Free Activities

City Gallery Wellington

Enjoy captivating art from some of the world's leading artists.

Parliament Buildings Tour

Explore the Parliament buildings, learn about the Parliamentary process in New Zealand.

Mount Victoria Lookout

Walk through historic pine forest and enjoy unbeatable views of the harbour and city.

Wellington Museum

Rated by Lonely Planet as one of their top 500 places on earth, New Zealand's national museum is a must-visit.

Sponsors and Exhibitors

RANZCOG would like to extend our thanks and gratitude to all our Sponsors and Exhibitors: without them our ASM would not be possible.

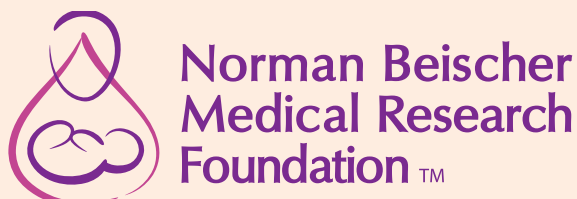
Official Presenting Partner



Major Partner



Major Supporter



RANZCOG Crèche and Parents Room

A crèche will be available for all delegates during the main days of the Scientific Program (Monday 14 October–Wednesday 16 October 2024).

You can indicate during the registration process should you wish to utilise this service and you will be contacted directly. Please visit the ASM Website for opening hours and pricing.

The cost of the crèche is subsidised by RANZCOG.

A Parents Room will be available for all delegates during the main days of the Scientific Program (Monday 14 October–Wednesday 16 October 2024).



Te Reo Māori Glossary

To assist the many Australians who will be travelling to Aotearoa New Zealand for the RANZCOG ASM 2024, our team have put together a glossary of common words and phrases that are used in every day interactions in Aotearoa New Zealand.

Scan the QR code below to learn some Te Reo Māori before your journey!





Continuing Professional Development

Delivering excellence in women's healthcare at all stages in life.

Maximising Hours

RANZCOG Fellows, Associate Members, Educational Affiliates and CPD Affiliates

Attendance at the RANZCOG Annual Scientific Meeting 2024 is approved for RANZCOG CPD hours under the Educational Activities domain.

Full Attendance (Meeting only)	18.5 hours
Monday 14 October 2024	6 hours
Tuesday 15 October 2024	7.5 hours
Wednesday 16 October 2024	5 hours

A certificate of attendance will be issued to all delegates after the event. RANZCOG Fellows, Associate Members, and Education Affiliates and CPD Affiliates will have their CPD hours uploaded on their behalf. All other delegates may self-claim CPD with their respective colleges.

RANZCOG Associates (Procedural/Adv Procedural and GPs)

Case Based Discussion Workshop

Unlock a world into medical insights in our thought provoking and collaborate half-day workshop designed for RANZCOG Associates (Procedural/ Adv Procedural) and GPs working in private practice, locum positions, or rural areas. This is a great opportunity for GPs to reflect on their current practice for improved patient outcomes.

Sunday 13 October, 08.30–12.30

Maintaining your Annual Membership

RANZCOG Associates (Procedural/Adv Procedural) and Certificants

Completion of a Professional Development Plan (PDP) is a mandatory requirement for all College CPD Homes. To maintain CPD requirements, Associates (Procedural and Advanced Procedural) and Certificants will be required to include goal(s)/ activity(s) for women's reproductive health, aligned to their scope of practice, and provide evidence of completion of activities in their CPD portal.

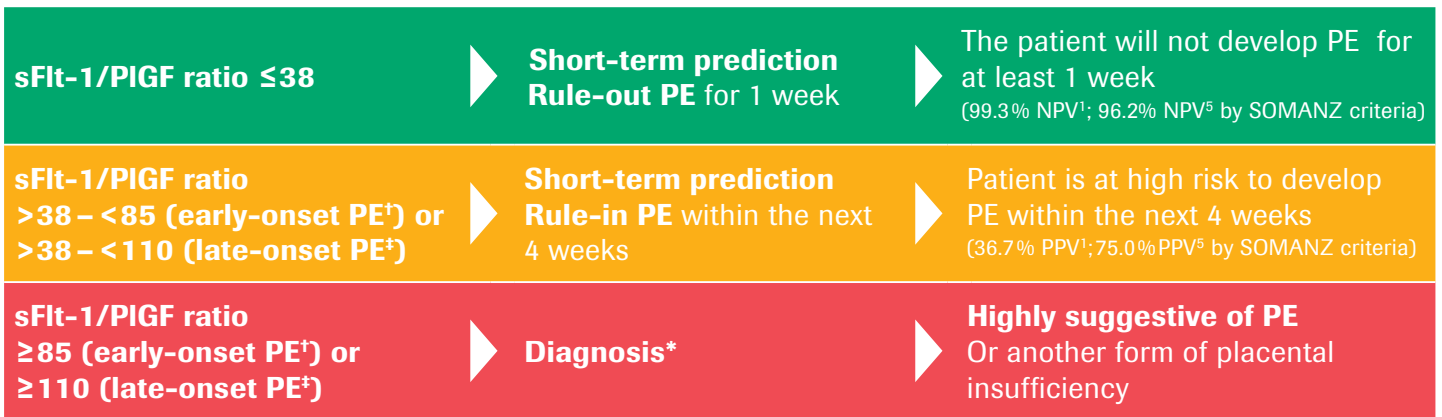


Scan for more information and to check your eligibility.

Using the sFlt-1/PlGF ratio, 8 of 10 pregnant women/people at risk for preeclampsia, could be ruled out. ⁴

What does the sFlt-1/PlGF ratio tell me?

Reassuring women/people and avoiding unnecessary stress and hospitalisation.⁴ The Roche Elecsys® sFlt-1/PlGF ratio was found to aid in the prediction and diagnosis of PE using selected cut-offs:¹⁻³



[†]Early-onset PE: 20 – <34 weeks gestation; [‡]Late-onset PE: ≥34 weeks gestation; *Use in addition to other accepted diagnostic tools and clinical information; NPV: negative predictive value; PPV: positive predictive value; SOMANZ: Society of Obstetric Medicine Australia and New Zealand

When should I determine the sFlt-1/PlGF ratio? (pregnancy week ≥20+0)

1. Clinical suspicion of preeclampsia: Women/people with signs & symptoms

New definition of preeclampsia⁶ (after 20 weeks of gestation)

Hypertension (new onset):
Systolic ≥ 140 mmHg
Diastolic ≥ 90 mmHg

AND

Proteinuria - urine protein/creatinine ratio ≥ 30mg/mmol

OR

in **absence of proteinuria** one or more of the following

- Thrombocytopenia
- Renal insufficiency
- Impaired liver function
- Pulmonary oedema
- Cerebral or visual symptoms
- Fetal growth restriction

2. Unclear Diagnosis of preeclampsia: Women/people with non-specific signs & symptoms

High risk women/people^{6,7}

1. Previous preeclampsia
2. Antiphospholipid Syndrome
3. Type 1 or 2 Diabetes
4. BMI >35
5. Chronic hypertension
6. History of preeclampsia in a 1st degree relative
7. Chronic renal disease

Medium risk women/people^{6,7}

1. Nulliparity
2. Multiple pregnancy
3. Age ≥40
4. Systolic BP>130mmHg before 20 weeks
5. Diastolic BP>80mmHg before 20 weeks
6. Chronic autoimmune disease
7. Interpregnancy interval > 10 years
8. BMI > 25- 34

References

1. Zeisler, H. et al. (2016). *N Engl J Med* 374, 13-22.
2. Verloren, S. et al. (2010). *Am J Obstet Gynecol* 202(2),161.e1-161.e11.
3. Verloren, S. et al. (2014). *Hypertension* 63(2), 346-52.
4. Stepan et al. (2015). *Ultrasound Obstet Gynecol* 45, 241-24.
5. Hughes RCE et al (2022). *Aust N Z J Obstet Gynaecol*. doi: 10.1111/ajo.13549
6. Lowe, SA. et al(2014). Society of Obstetric Medicine Australia and New Zealand (SOMANZ) *Guideline for the Management of Hypertensive Disorders of Pregnancy, Aust N Z J Obstet Gynaecol*. 2015 55(5).
7. Te Whatu Ora - Health New Zealand. 2022. *Diagnosis and Treatment of Hypertension and Pre-eclampsia in Pregnancy in Aotearoa New Zealand*. <https://www.tewhatuora.govt.nz/assets/Publications/Evidence-Statements-Hypertension-and-Pre-Eclampsia.pdf>. Accessed 15/05/2024.

COBAS and ELECSYS are trademarks of Roche. © 2024 Roche Diagnostics. All rights reserved.

Roche Diagnostics NZ Ltd, ANZ Raranga building, Level 1, Sylvia Park, Mount Wellington Highway, Mount Wellington, Auckland 1060, New Zealand
Ph: +64 9 276 4157
Email: new_zealand.dia_communications@roche.com

Registration Information

Please find detailed information for each registration category below. We recommend taking time to read through this to find out what type of registration works for you.

In Person

Full Registration

Includes

- In person attendance at all meeting sessions (Monday to Wednesday)
- Trade exhibition admission
- Morning and afternoon tea (if applicable) and lunch for the duration of the meeting
- One ticket to the Welcome Reception held on Monday 14 October
- Digital Meeting App
- On Demand access to all content across the 3-day 3 stream Scientific Program post event for 3 months

Please note tickets to the social functions and Pre-Meeting Workshops are an additional cost.

In Person Day

Registration

Includes

- In person attendance at all meeting sessions on day of attendance (Monday, Tuesday and/or Wednesday)
- Trade exhibition admission on day(s) of attendance
- Morning and afternoon tea (if applicable) and lunch on day(s) of attendance
- Digital Meeting App
- On Demand access to all content across the 3-day 3 stream Scientific Program post event for 3 months

Please note tickets to social functions and Pre-Meeting Workshops are an additional cost.

On Demand

Full Registration

Includes

- Digital Meeting App
- On Demand access from 4 November to all content across the 3-day 3 stream Scientific Program post event for 3 months

Cancellation Policy

Registration cancellations will not be accepted unless made in writing to the RANZCOG 2024 Annual Scientific Meeting Secretariat at ranzocg@kandmevents.com.au

Conditions

Up to 60 days prior to the event

60 days prior to the event

30 days prior to the event

Charges

100% refund less
10% administration fee

50% refund less
10% administration fee

No refund available

No refund will be paid following failure to attend without notice

Where there are extenuating circumstances, a full refund of the registration fee may be considered by and at the discretion of RANZCOG.

Payment

All prices are in Australian dollars. Payment must accompany your registration. RANZCOG 2024 Annual Scientific Meeting registration cannot be confirmed until payment is received. RANZCOG will not be liable to compensate for exchange rate fluctuations.

Credit Card

MasterCard and Visa are accepted. Payment by Cheque or EFT is not accepted.

On Demand

Virtual attendance for the 2024 ASM will be On Demand, with attendees offered the opportunity to watch all presentations after the ASM on 4 November 2024. Livestream will not be offered.

IN PERSON FULL REGISTRATION	EARLYBIRD (On or before 7 August 2024)	STANDARD (After 7 August 2024)
Full Registration Non-Member	\$2,901	\$2,901
Full Registration Fellow / Specialist	\$1,826	\$1,990
Full Registration Trainee	\$1,336	\$1,714
Full Registration RANZCOG Associates (Procedural/Adv Procedural)/ General Practitioner	\$1,336	\$1,714
Full Registration International Affiliate/ Junior Doctor/Midwives	\$913	\$1,142
Full Registration Low Resource Country	\$555	\$622
Full Registration Retired Fellow	\$913	\$1,142
Full Registration Medical Student	\$392	\$392

IN PERSON DAY REGISTRATION	STANDARD
Day Registration Non-Member	\$1,299
Day Registration Fellow / Specialist	\$997
Day Registration Trainee	\$745
Day Registration RANZCOG Associates (Procedural/Adv Procedural)/ General Practitioner	\$745
Day Registration International Affiliate/ Junior Doctor/Midwives	\$498
Day Registration Low Resource Country	\$297
Day Registration Retired Fellow	\$498
Day Registration Medical Student	\$179

ON DEMAND REGISTRATION	STANDARD
Virtual Registration Non-Member	\$2,522
Virtual Registration Fellow / Specialist	\$1,730
Virtual Registration Trainee	\$1,490
Virtual Registration RANZCOG Associates (Procedural/ Adv Procedural)/ General Practitioner	\$1,490
Virtual Registration International Affiliate/ Junior Doctor/Midwives	\$993
Virtual Registration Low Resource Country	\$541
Virtual Registration Retired Fellow	\$993
Virtual Registration Medical Student	\$341

Please note: Day Registration does not attract an Earlybird option.

Please note: Virtual attendance for the 2024 ASM will be **on demand only**, with attendees offered the opportunity to watch all presentations after the conclusion of the ASM. Livestream of Plenaries and Concurrent Sessions will not be offered.

Please note: All prices quoted are in AUD.

Venue Information

Pre-Meeting Workshops

Museum of New Zealand Te Papa Tongarewa

Saturday 12–Sunday 13 October

RANZCOG ASM 2024 Pre-Meeting Workshops will take place in Te Papa Tongarewa, opposite Tākina.

55 Cable Street, Te Aro, Wellington, Aotearoa New Zealand, 6011

Annual Scientific Meeting

Tākina Wellington Convention and Exhibition Centre

Monday 14–Wednesday 16 October

Tākina Wellington Convention and Exhibition Centre is the venue for the RANZCOG ASM's Scientific Program and is the home of inspiring exhibitions and informative conferences in the heart of Wellington CBD's cultural precinct.

50 Cable Street, Te Aro, Wellington, Aotearoa New Zealand, 6011



General Information

How to book Accommodation

Booking your accommodation is a seamless process. Simply register for the event and you will be guided through to an accommodation page, select the hotel you would like to book, select your preferred room type, and enter your credit card details. The credit card will only be deducted 30 days prior to the conference in order to secure your reservation.

Change of Booking and Cancellation

All reservations are subject to the individual hotel cancellation policies as stated in the hotel information on their website. RANZCOG does not take any responsibility for booking of accommodation or cancellation thereof.

Credit Card Guarantee

Credit card details may be required as a guarantee for your accommodation booking; you will need to provide these when booking with your chosen hotel.

Payment of Accommodation

The accommodation account and any incidental charges must be paid in full, directly to the hotel, on departure.

On Demand Access for all Delegates

Missed a presentation? All recorded conference materials will appear on the conference platform for up to 90 days after the conference so you will have time to go back and watch anything you may have missed.

Trade Exhibition

The trade exhibition will be an integral component of the ASM. This is a great opportunity for delegates to meet with trade representatives from the leading companies that provide products and services to the fields of Obstetrics and Gynaecology and find out about the latest developments and trends designed to assist practitioners.

To acknowledge the importance of the exhibition, the meeting program has been structured to ensure delegates have ample time to visit the trade area. Daily morning, afternoon teas (if applicable) and lunches will be held in this area.

Dress Code

Please note that the dress standard for the meeting will be smart casual.

Insurance

Delegates are strongly advised to secure appropriate travel and health insurance. Delegate registration fees do not provide any such insurance coverage. The Organising Committee, RANZCOG and the Meeting Secretariat accept no responsibility for any loss in this regard.

Liability Disclaimer

In case of industrial disruption, the Organising Committee, RANZCOG and the Meeting Secretariat accept no responsibility for loss of monies incurred by delegates.

Privacy Statement

Information provided on the registration form will be used to administer the Meeting including accommodation, catering, transport, sponsorship and exhibition. Data obtained will remain the property of RANZCOG and The Meeting Secretariat.

Visa Information (International Only)

Some people can use a New Zealand Electronic Travel Authority (NZeTA) to travel to New Zealand without applying for a visa first. This depends on your passport, how you are travelling and if you are visiting or only transiting. People travelling on a passport from some countries must apply for a Visitor Visa to visit New Zealand. If you are from a visa waiver country you may be able to visit New Zealand without a visa. Please note that visa processing times may vary. Delegates are encouraged to apply for the appropriate visa six to eight weeks before departure to New Zealand. For information about visa applications to enter New Zealand, please visit: <https://www.immigration.govt.nz/>

Importantly, it is the policy of the Meeting Secretariat not to supply an 'invitation letter' to unpaid or unregistered delegates as it is not required and does not assist in the visa-application process. Upon payment of registration fees, each delegate receives a confirmation letter of acceptance of registration and receipt of payment.

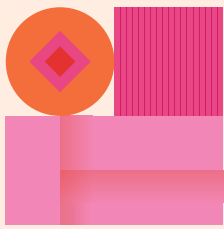
Contact

For further information contact the RANZCOG ASM Professional Conference Organiser, K&M Events:

K&M Events

57 Miranda Rd, Miranda NSW 2228
+61 2 7501 5636
ranzcoog@kandmevents.com.au





RANZCOG

Annual Scientific Meeting 2024

Wellington, Aotearoa New Zealand | 12–16 October

Partnerships in Practice

www.ranzcogasm.com.au



RANZCOG™
Excellence in Women's Health