

Placental Site Nodule in Postmenopausal Woman A Case Report and Review of Literature



Peninsula
Health

Jangala D¹, Tara S²

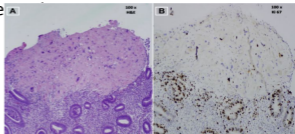
djangala@phcn.vic.gov.au

Background

Placental site nodule is a rare benign tumour of intermediate trophoblasts with a common presentation. This report presents a case of PSN in a post-menopausal woman, second case if its type ever to be reported in literature

Case

A multiparous 53-year postmenopausal lady presented with post-coital bleeding over a 3-year period. Her last pregnancy was 6 years ago. Initial investigations comprising a Papanicolaou smear demonstrated possible LSIL and Non 16/18 HPV. Subsequent colposcopy showed a cervical polyp with some acetowhite areas. Hysteroscopy with dilatation and curettage and polypectomy was done. Histopathological assessment revealed a hyalinised lesion beneath squamous mucosa showing intermediate trophoblasts with mildly irregular nuclei and large amount of eosinophilic cytoplasm in ce
Curetting which was Placental Alkaline Phosphatase (PLAP) positive and Ki-67 of less than 5%, suggestive of PSN.



Discussion

PSN is hypothesized to be remnants of intermediate trophoblast from a previous pregnancy that has failed to involute completely and usually found in women of reproductive age group. It can also be found in postmenopausal women either solely or in coexistence with malignant lesions¹. A literature review from 1989 to 2019 revealed that less than 200 cases of PSN have been reported and only one of them was in postmenopausal women.

PSN most commonly presents with abnormal pap smears or AUB². It is benign, however, differentiating it from other malignant lesions with similar presentation is essential. PSN once removed does not recur and thus ongoing treatment is not mandatory.

References

1. Luna DV, Dulcey I, Nogales FF. Coexistence of placental site nodule and cervical squamous carcinoma in a 72-yr woman. *Int J Gynecol Pathol*. 2013 May;32(3):335-7. doi: 10.1097/PGP.0b013e31826a62d8. PMID: 23518918.
2. Giordano G, Manuguerra R, Varotti E, Brigati F. A case of placental site nodule associated with cervical high-grade squamous intraepithelial lesion. *Eur J Gynaecol Oncol*. 2016;37(2):259-61. PMID: 27172758.