

TRENDS IN THE BIRTH INCIDENCE OF THE MOST COMMON CONGENITAL CONDITIONS IN AUSTRALIA BETWEEN 1993 AND 2017

Dr. Ronit Cukierman, Prof. Stephen Robson. Centenary Hospital for Women, Canberra.



How has the “screening era” impacted trends in Australia?

Aim → To establish the trends overall in common congenital anomalies in Australia across the screening era

Study Design ❖ Retrospective database obtained from the Australian Institute of Health and Welfare (AIHW)

Methods

- ❖ Data was obtained regarding reported birth incidence from 1993 to 2017 of the most common congenital conditions in live birth: hypospadias, ureteric obstruction, cleft lip/palate, coarctation of the aorta, T21, hydrocephalus, renal agenesis, and spina bifida.
- ❖ The total live births each year were used as a denominator to calculate incidence rates
- ❖ Published data from other national collections were plotted for validation.
- ❖ Regressions were performed to assess trends.

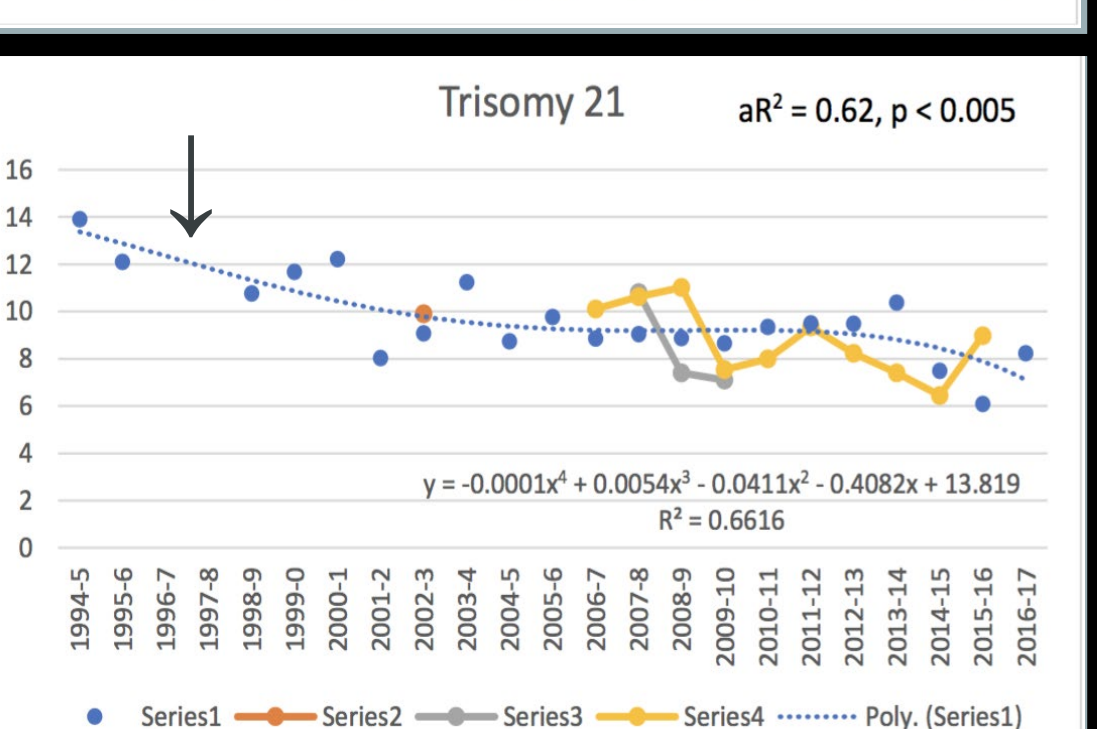
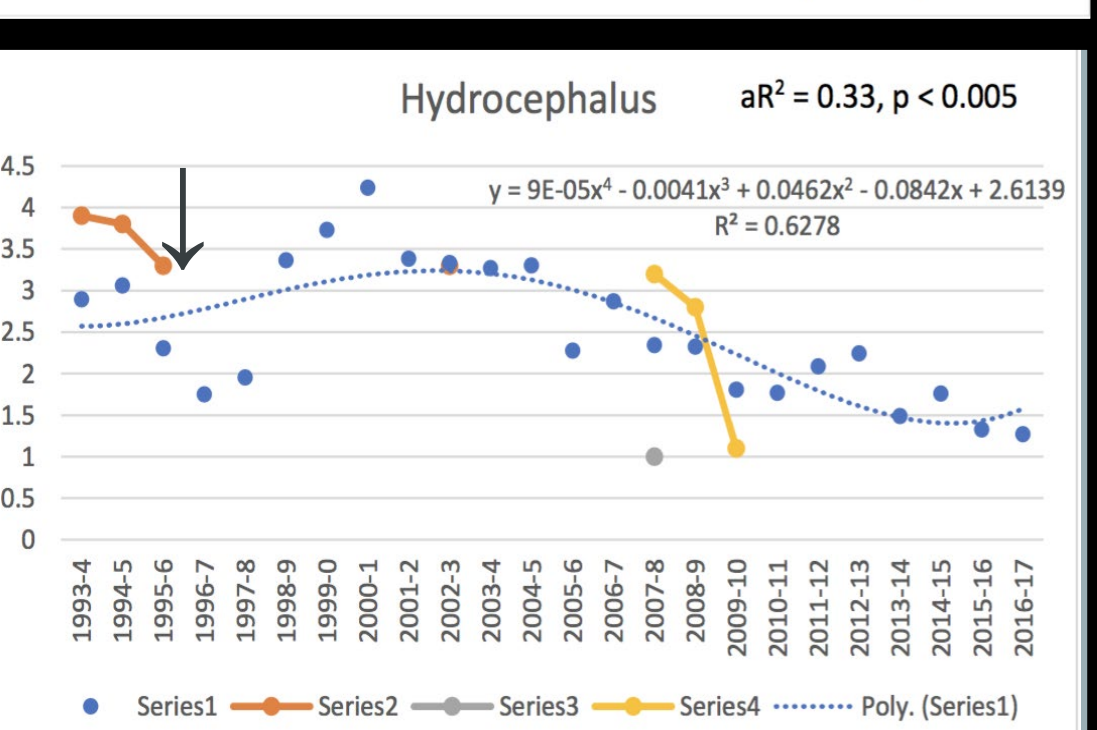
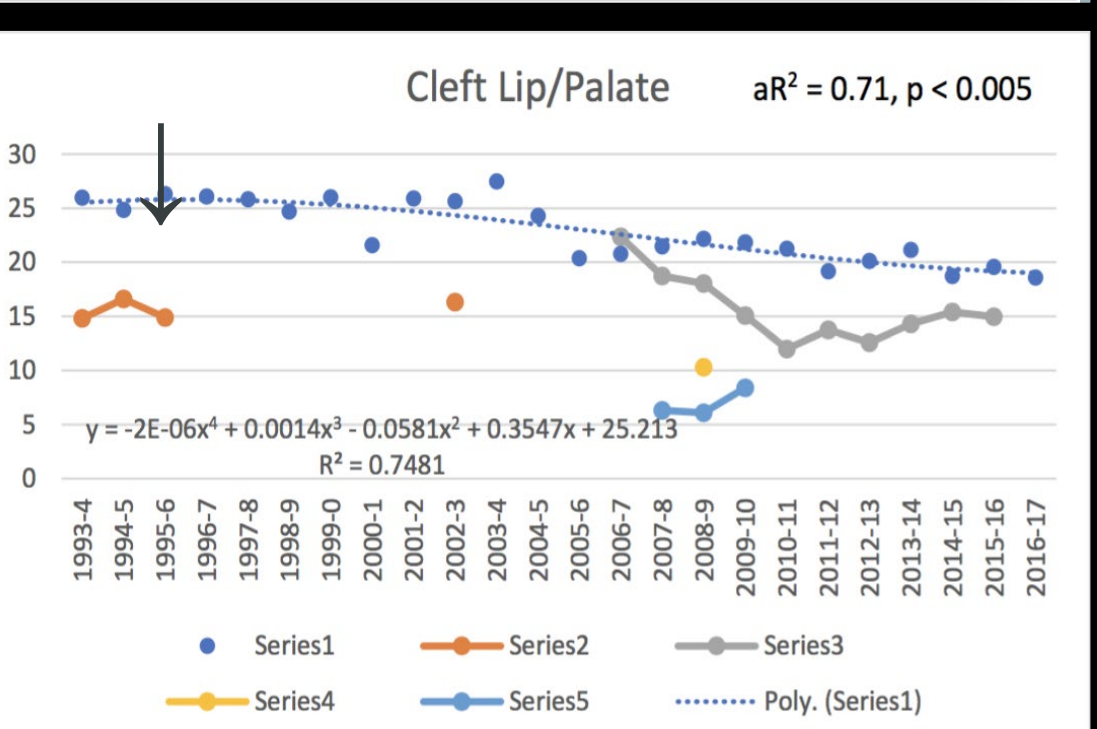
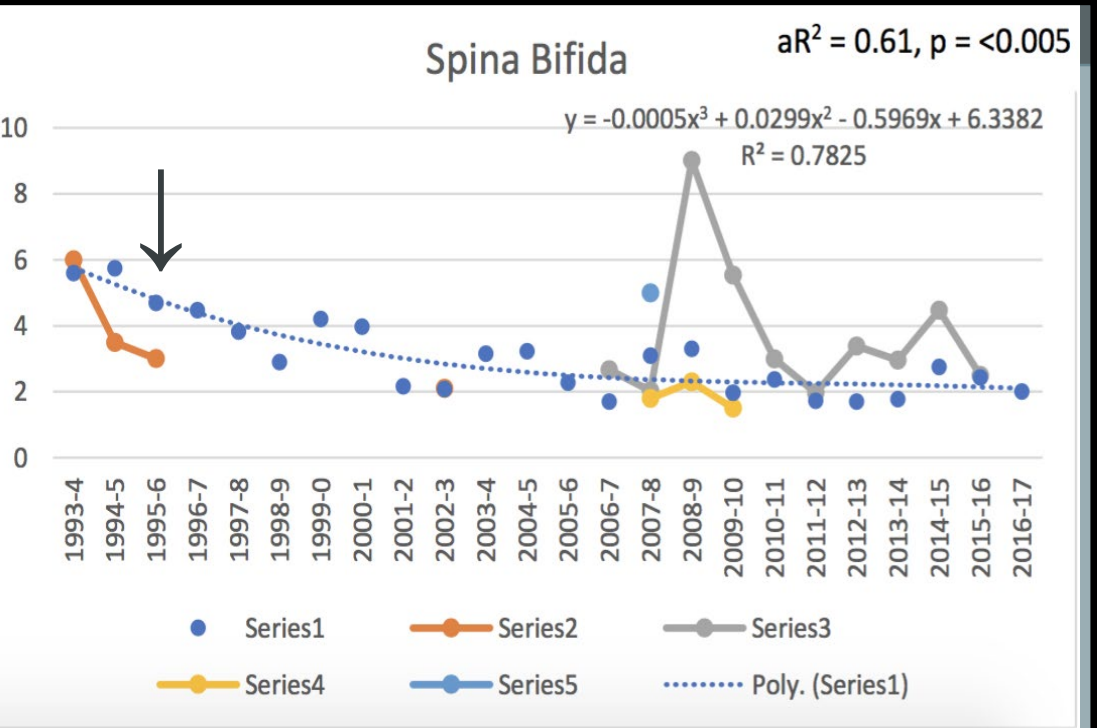
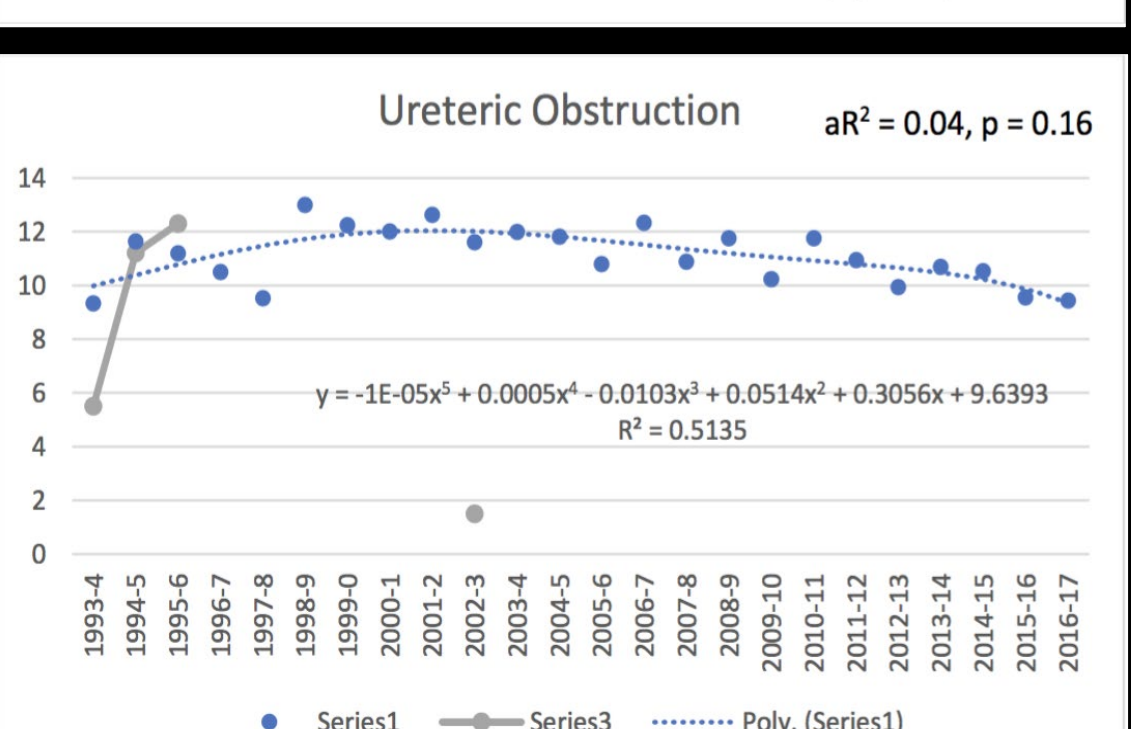
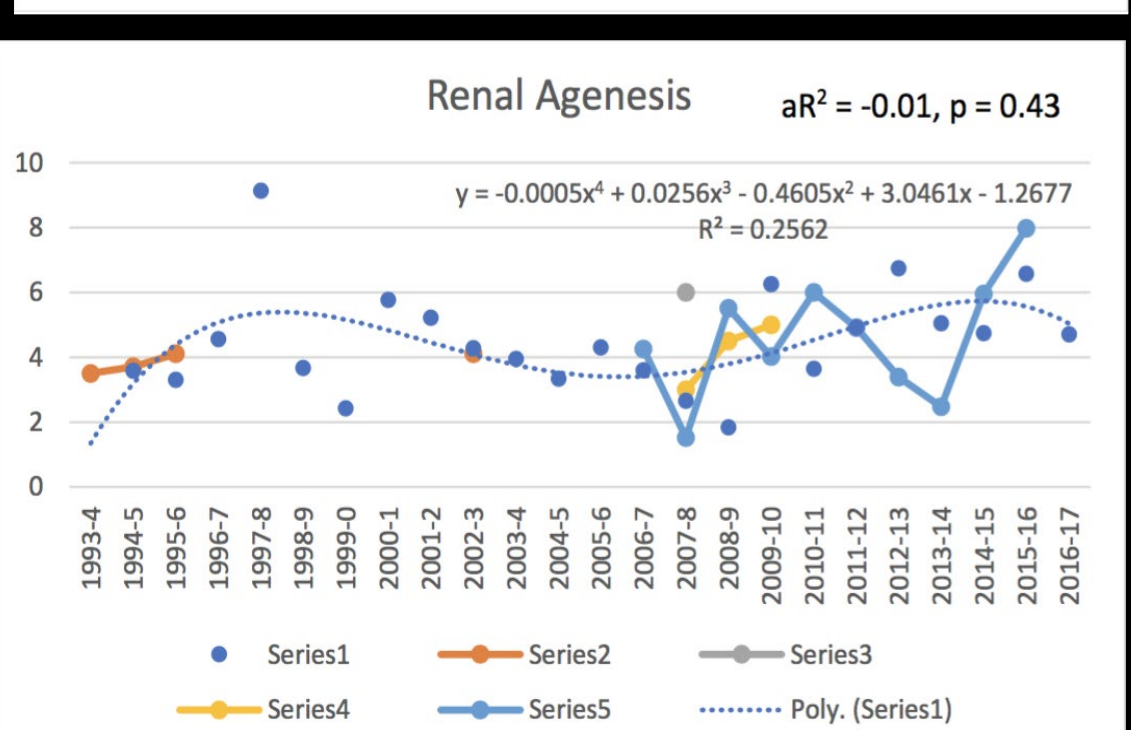
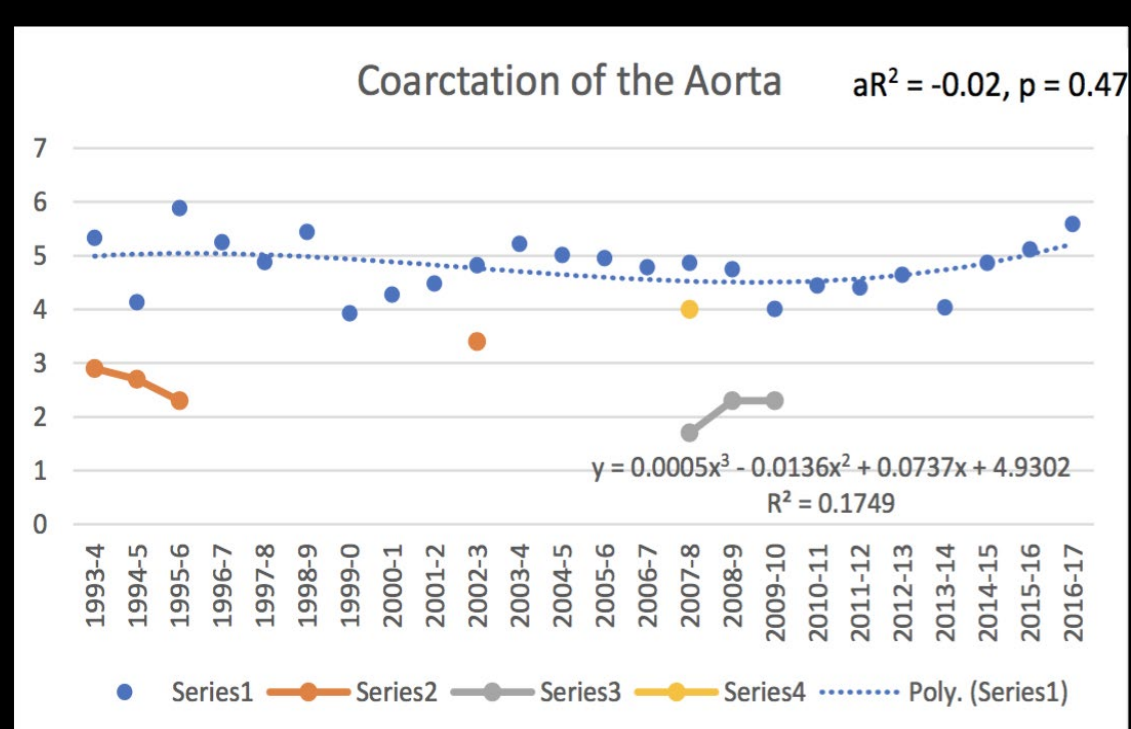
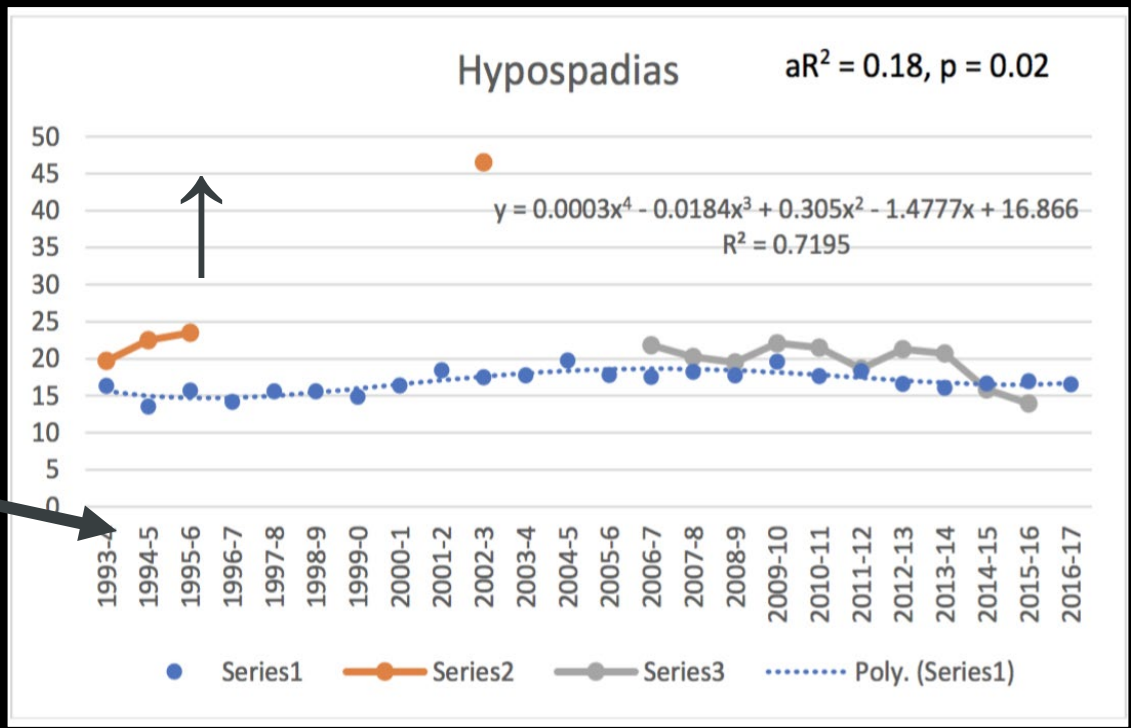


Results

There was an ↑ in the birth incidence of hypospadias.

Over the 24-year study period we identified significant ↓ in the birth incidence of spina bifida, cleft lip and/or palate, hydrocephalus and T21.

No change was found in the rate of ureteric obstruction, renal agenesis, and coarctation of the aorta



Conclusion

❖ It is likely that population-level pregnancy risk reduction and screening programs have contributed to reductions in certain important conditions.